

# PRODUCT SPECIFICATIONS

**Publication Date:**

August, 2018

**Description:**

Isuzu Truck SmartBar

**Application:**

500, 550, 700 Series Models

**Fitting:**

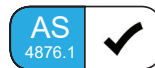
Minimum 3 Hours

**Available:**

Made to Order



PROUDLY  
AUSTRALIAN MADE



## Product Specification

Specifically designed for the Isuzu 500, 550, 700 Series Truck range as a full bumper replacement, SmartBar's Vehicle Frontal Protection System (VFPS) complements the design and shape of the vehicle, maintains most of the factory accessories and all the while provides unparalleled safety.

Designed to suit the 500, 550, 700 (10/97-10/07) model variants, the SmartBar is engineered to be the lightest and safest VFPS available; offering even more protection and safety for vehicle owners and importantly, pedestrians.

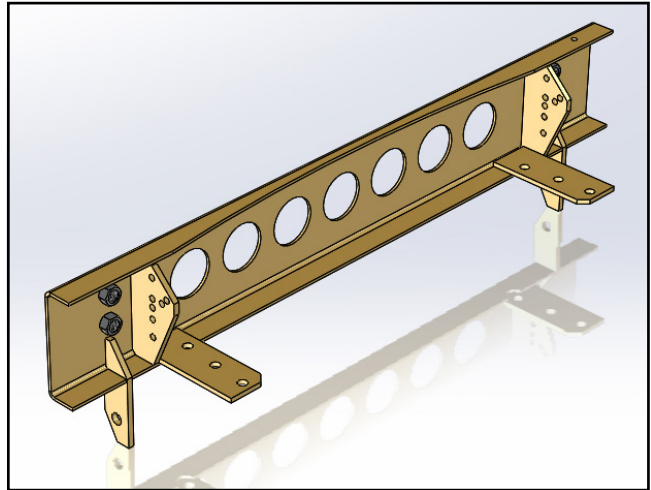
## Protection & Styling Characteristics:

- Meets full Australian Standard AS 4876.1-2002. Including 3.2 Road User Protection
- Weight savings provide improved fuel economy and reduced tyre, suspension and brake wear when compared to other alternatives
- Bumper replacement, easily fitted
- Superior frontal protection, due to the impact absorbing hollow construction
- Supplied with durable orange lens indicator lights
- Supplied with durable clear lens parker lights
- Supplied with quality Narva fog lamps
- Does not accept original vehicle fog lamps
- UV stabilised polymer for durability and corrosion resistance
- Styled to maintain the Vehicle's aesthetic
- Proudly designed and manufactured in Australia
- Minimal maintenance
- Minimal repair costs after impact
- Manufactured from environmentally friendly, recyclable polyethylene polymer
- Available in Black as standard, other colours available for large order quantities
- SmartBar is tested to ensure a HIC (Head Injury Criteria) figure below the Australian Standard rating of 1500, as to provide pedestrians with a higher probability of surviving a low speed impact

## Chassis Mounts:

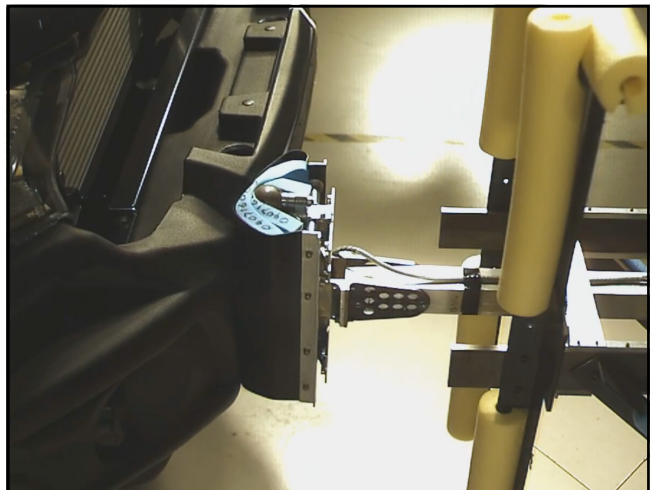
The chassis mount design comprises of a two part construction which allows the bar to tilt forward to account for the cabin tilt and achieves a solid and perfect fit every time.

All brackets have been tested and comply with Vehicle Air Bag, Winch Maximum Pull Exertion and Australian Safety Standards.



## Pedestrian Safety:

SmartBar's have been tested and proven to be less likely to cause serious injury to pedestrians than other alternatives. This is due to the hollow construction which allows the bar to absorb most of the impact along with the unique and specifically designed co-polymer material.



## Indicators:

The SmartBar is supplied with 2 x indicator lamps installed on the bar.

Part Number:  
BP1179



## Parker Lights:

The SmartBar is supplied with 2 x Parker lamps installed on the bar.

Part Number:  
BP1180



## Fog Lights:

The SmartBar is supplied with 2 x Narva Fog Lamps.

Part Number:  
BP1176



# PART NUMBER MATRIX

## SMARTBAR ISUZU TRUCK 500, 550, 700 SERIES (10/97-10/07)

SmartBar

Fitting Time		3 Hours
Vehicle	Model (Guide Only)	
Isuzu Truck <sup>1</sup>	500, 550, 700 Series	SA020BL021

Please note:

<sup>1</sup> The SmartBar is only available on made to order