

PRODUCT SPECIFICATIONS

**Publication Date:**

August, 2018

Description:

Mitsubishi Pajero NP SmartBar

Application:

Mitsubishi Pajero NP (12/02-01/07), refer last page for fitment information

Fitting:

Minimum 3 Hours

Available:

Now



PROUDLY
AUSTRALIAN MADE



Product Specification

Specifically designed for the Mitsubishi Pajero NP (12/02-01/07) as a full bumper replacement, SmartBar's Vehicle Frontal Protection System (VFPS) complements the design and shape of the vehicle, maintains most of the factory accessories and all the while provides unparalleled safety.

Designed to suit the VRX and Exceed model variants in all body types, the SmartBar is engineered to be the lightest and safest VFPS available; offering even more protection and safety for vehicle owners and importantly, pedestrians.

Please note that the silver colour is no longer available, black is available as standard with other colour options only for large quantity orders.

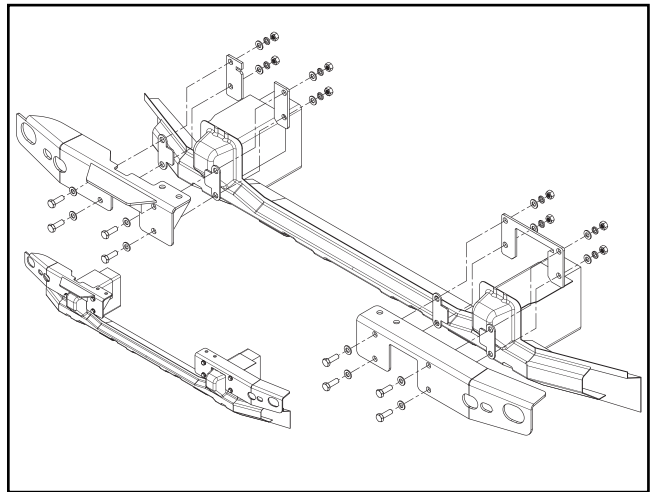
Protection & Styling Characteristics:

- Meets full Australian Standard AS 4876.1-2002. Including 3.2 Road User Protection
- Weight savings provide improved fuel economy and reduced tyre, suspension and brake wear when compared to other alternatives
- Air Bag Compatible
- Bumper replacement, easily fitted
- Superior frontal protection, due to the impact absorbing hollow construction
- Supplied with durable LED Indicator/Parker Lights
- Supplied with 2 x Aerial Mount Brackets
- Does not accept original vehicle fog lamps
- UV stabilised polymer for durability and corrosion resistance
- Styled to maintain the Vehicle's aesthetic
- Proudly designed and manufactured in Australia
- Minimal maintenance
- Minimal repair costs after impact
- Manufactured from environmentally friendly, recyclable polyethylene polymer
- Available in Black as standard, other colours available for large order quantities
- SmartBar is tested to ensure a HIC (Head Injury Criteria) figure below the Australian Standard rating of 1500, as to provide pedestrians with a higher probability of surviving a low speed impact

Chassis Mounts:

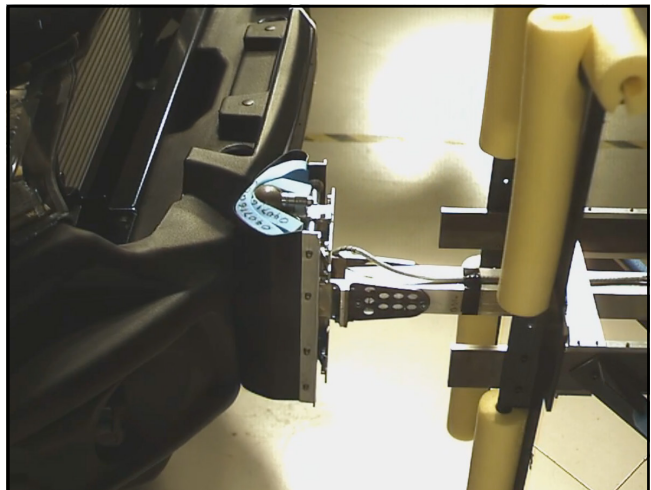
The chassis mount design directly mounts to the chassis cross member and allows for two axis adjustability, to achieve a solid and perfect fit every time.

All brackets have been tested and comply with Vehicle Air Bag and Australian Safety Standards.



Pedestrian Safety:

SmartBar's have been tested and proven to be less likely to cause serious injury to pedestrians than other alternatives. This is due to the hollow construction which allows the bar to absorb most of the impact along with the unique and specifically designed co-polymer material.



LED Parker/Indicators:

The SmartBar is supplied with high quality LED Parker/Indicator lights as shown here.

Please note that there has been a part supply change since the bar was released. Please check the light before placing orders for replacement parts to ensure you receive the correct replacement. Current light has a chrome surround and an orange and white lens (BP50035/BP50042).



PART NUMBER MATRIX



SMARTBAR MITSUBISHI PAJERO NP (12/02-01/07)

SmartBar
Non Winch

Fitting Time	3 Hours
Vehicle	Model (Guide Only)
Mitsubishi Pajero NP	VR and Exceed SA074BL089