

PRODUCT SPECIFICATIONS

**Publication Date:**

August, 2018

Description:

Toyota Camry SmartBar
Toyota Aurion SmartBar

Application:

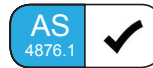
Toyota Camry (07/06-12/11)
Toyota Aurion (10/06-04/12)

Fitting:

Minimum 3 Hours excluding
Sonar Kit installation

Available:

Now



Product Specification

Specifically designed for the Toyota Camry (07/06-12/11) and Aurion (10/06-04/12) models as a full bumper replacement, the latest model of SmartBar's Vehicle Frontal Protection System (VFPS) complements the design and shape of the vehicle, maintains all of the factory accessories and all the while provides unparalleled safety.

Designed to suit the Camry ACV 40R and Aurion GSV40R, the SmartBar is engineered to be the lightest and safest VFPS available; offering even more protection and safety for vehicle owners and importantly, pedestrians.

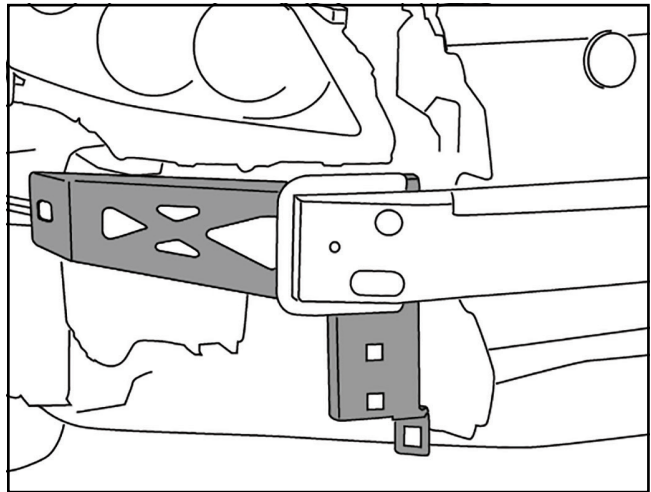
Protection & Styling Characteristics:

- Meets full Australian Standard AS 4876.1-2002. Including 3.2 Road User Protection
- Weight savings provide improved fuel economy and reduced tyre, suspension and brake wear when compared to other alternatives
- Fitted Weight of **26kg**
- Air Bag Compatible
- Partial bumper replacement, easily fitted
- Superior frontal protection, due to the impact absorbing hollow construction
- Accepts the original vehicle fog lights
- Optional 100mm Driving Light kit available for purchase
- Optional 100mm Fog Light kit available for purchase
- Supplied with Durable LED Parker/Indicator Lights
- Supplied with 2 x Antenna Mounts
- Antenna mount location on loops of the bar, 2 available
- Uni Bar mounting location in number plate area
- Sonar Kit required to be purchased for relevant Aurion variants
- UV stabilised polymer for durability and corrosion resistance
- Styled to maintain the Vehicle's aesthetic
- Proudly designed and manufactured in Australia
- Minimal maintenance
- Minimal repair costs after impact
- Manufactured from environmentally friendly, recyclable polyethylene polymer
- Available in Black as standard, other colours available for large order quantities
- SmartBar is tested to ensure a HIC (Head Injury Criteria) figure below the Australian Standard rating of 1500, as to provide pedestrians with a higher probability of surviving a low speed impact

Chassis Mounts:

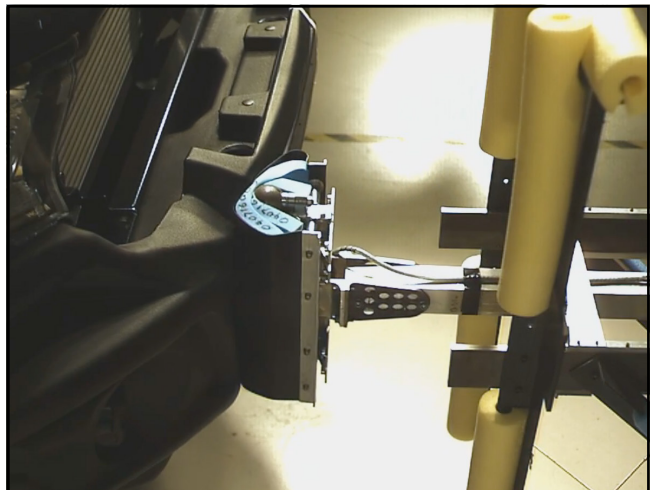
The chassis mount design for the SmartBar comprises of a two part construction which allows for two axis adjustability, to achieve a solid and perfect fit every time.

All brackets have been tested and comply with Australian Safety Standards.



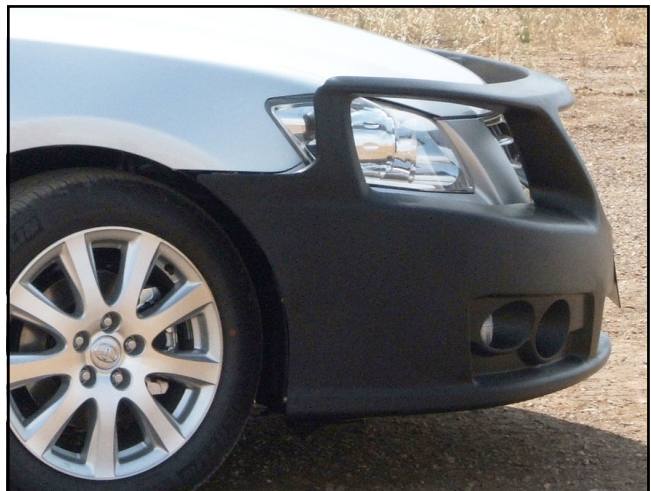
Pedestrian Safety:

SmartBar's have been tested and proven to be less likely to cause serious injury to pedestrians than other alternatives. This is due to the hollow construction which allows the bar to absorb most of the impact along with the unique and specifically designed co-polymer material.



Bumper Trim:

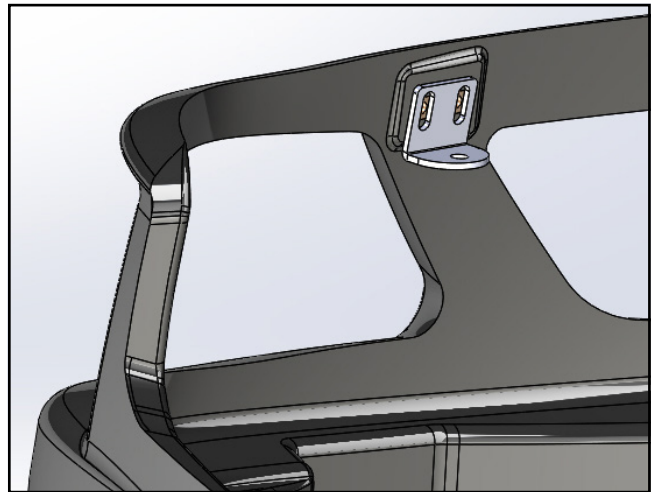
The bar is easily fitted as a partial bumper replacement and as such, requires a bumper trim during installation. Instructions and Trim Templates are supplied with the Bar to assist with fitment.



Aerial Mounts:

Two aerial mount brackets are supplied with the SmartBar and are located behind the hoops.

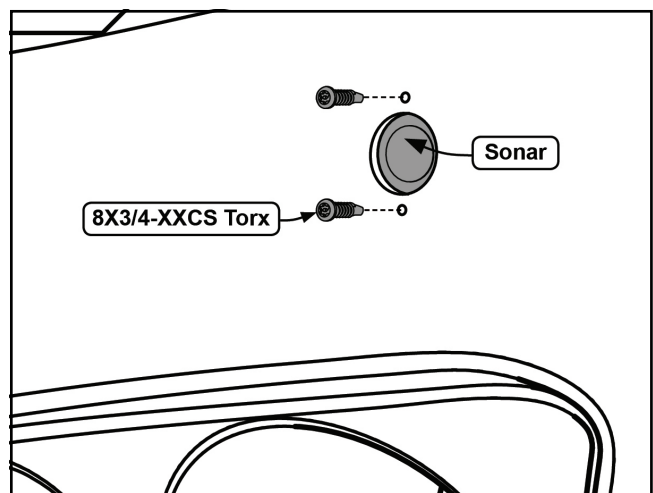
Part Number: 000-AMB14



Sonar Kit:

Some Aurion variants are supplied with front mounted parking sonars, there is a Sonar Kit (part number SA118SONAR) required to be purchased for these vehicles to enable the fitment of the sonars to the bar.

We do not recommend the fitment of aftermarket parking sonars/sensors to any SmartBar.



Indicator/Parker and Driving/Fog Lights:

The SmartBar is supplied with a bracket kit to allow the fitment of the OEM fog lights (where fitted to the original vehicle). It is also supplied with a high quality LED indicator/parker (not pictured).

There are two options for a 100mm light to be fitted to the bar should the vehicle not have one, a driving light and a fog light option are available for purchase (bar can only accommodate one option).





PART NUMBER MATRIX

SMARTBAR TOYOTA AURION (10/06-09/09) & (09/09-04/12) CAMRY (07/06-07/09) & (07/09-12/11)

Fitting Time	SmartBar	Required Sonar Kit ²	Optional Driving Light ¹	Optional Fog Light ¹
3 Hours	1 Hour	15 Mins	15 Mins	15 Mins
Vehicle	Model (Guide Only)			
Toyota Aurion GSV 40R (10/06-09/09) ²	SA118BL118	SA118SONAR ²	TP4878 ¹	TP23923 ¹
Toyota Aurion GSV 40R (09/09-04/12)	SA118BL118	SA118SONAR ²	TP4878 ¹	TP23923 ¹
Vehicle	Model (Guide Only)			
Toyota Camry ACV 40R (07/06-07/09)	Altise, Ateva, Grande, Sportivo	N/A	TP4878 ¹	TP23923 ¹
Toyota Camry ACV 40R (07/09-12/11)	Altise, Ateva, Grande, Sportivo	N/A	TP4878 ¹	TP23923 ¹

Please note:

¹ The SmartBar can only accommodate one option

² Sonar Kit required for the Aurion SX6 Sportivo, ZR6 Sportivo and Prodigy models, not the ATX