

PRODUCT SPECIFICATIONS



Publication Date:

August, 2018

Description:

Holden Colorado RG SmartBar
Holden Colorado 7 SmartBar

Application:

Holden Colorado RG (06/12-08/16)
Holden Colorado 7 (12/12-08/16)

Fitting:

Minimum 3.5 Hours
(Non Winch)
Minimum 4.5 Hours
(Winch)

Available:

Now



Product Specification

Designed to tackle tough terrain and unexpected obstacles, the Holden Colorado and Colorado 7 will take you nearly anywhere you want to go; and wherever this may be, the team at SmartBar want you and your vehicle to be protected.

Specifically designed for the 2012-2016 Holden Colorado and Colorado 7 as a partial bumper replacement, SmartBar's Vehicle Frontal Protection System (VFPS) perfectly complements the design and shape of the vehicle, maintains most of the factory accessories and all the while provides unparalleled safety. In addition, the ANCAP testing resulted in an offset frontal test score of 14.5 out of 16 for the Colorado with the SmartBar fitted.

Designed to suit the DX, LX, LT and LTZ Colorado variants and LT, LTZ Colorado 7 variants; the SmartBar is engineered to be the lightest and safest VFPS available, offering even more protection and safety for Colorado owners and now importantly, pedestrians.

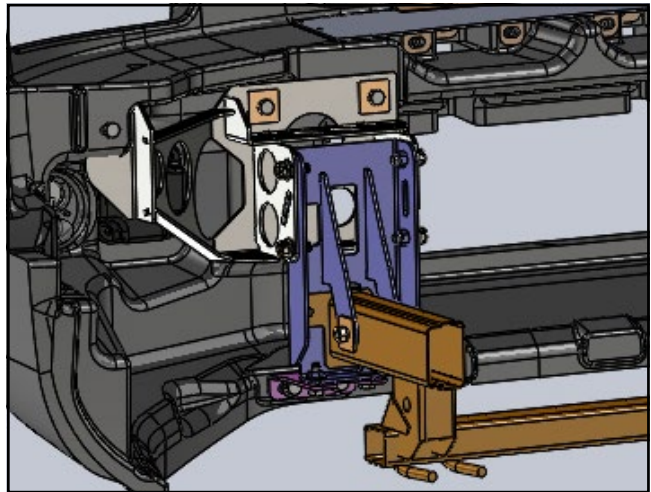
Protection & Styling Characteristics:

- Meets full Australian Standard AS 4876.1-2002. Including 3.2 Road User Protection
- Weight savings provide improved fuel economy and reduced tyre, suspension and brake wear when compared to other alternatives
- The five star ANCAP safety rating for the Holden Colorado is maintained when a SmartBar is fitted. (ANCAP however have not provided any information on the effects of the SmartBar on pedestrian safety)
- Fitted Weight of **34kg for Non Winch**
- Fitted Weight of **39kg for Winch**
- Bar adds an approximate additional 134mm to vehicle length
- Air Bag Compatible
- Bumper trim, easily fitted
- Superior frontal protection, due to the impact absorbing hollow construction
- Accepts the original vehicle fog lights
- Supplied with durable LED Parker/Indicator Lights
- Supplied with 2 x Antenna Mount
- Antenna mount location on loops of the bar, up to 4 available
- UV stabilised polymer for durability and corrosion resistance
- Styled to maintain the Vehicle's aesthetics
- Proudly designed and manufactured in Australia
- Minimal maintenance
- Minimal repair costs after impact
- Manufactured from environmentally friendly, recyclable polyethylene polymer
- Available in Black as standard, other colours available for large order quantities
- Accommodates a large range of spotlights
- Accommodates up to 9,500lb Winch (please refer overleaf for winch compatibility)
- SmartBar is tested to ensure a HIC (Head Injury Criteria) figure below the Australian Standard rating of 1500, as to provide pedestrians with a higher probability of surviving a low speed impact

Chassis Mounts:

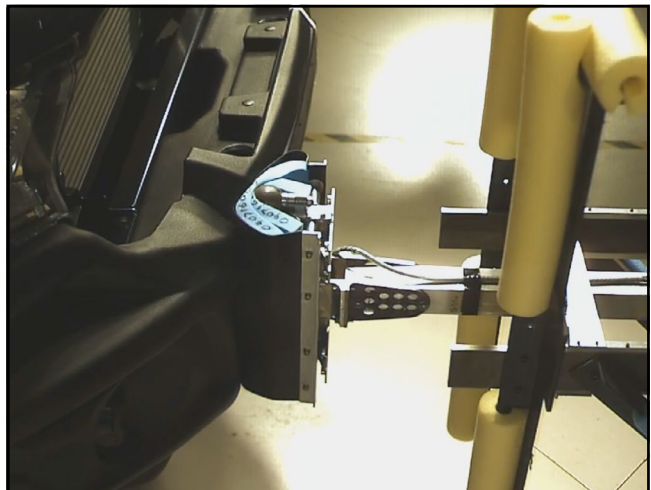
The chassis mount design comprises of a two part construction which allows for three axis adjustability, to achieve a solid and perfect fit every time.

All brackets have been tested and comply with Vehicle Air Bag, Winch Maximum Pull Exertion and Australian Safety Standards.



Pedestrian Safety:

SmartBar's have been tested and proven to be less likely to cause serious injury to pedestrians than other alternatives. This is due to the hollow construction which allows the bar to absorb most of the impact along with the unique and specifically designed co-polymer material.



LED Parker/Indicators & Fog Lights:

The SmartBar is supplied with high quality LED Parker Indicator lights as shown here in the orange.

Please note the bar is also compatible with the OEM Fog Lights, but they are not supplied with the bar.



Antenna Mounts:

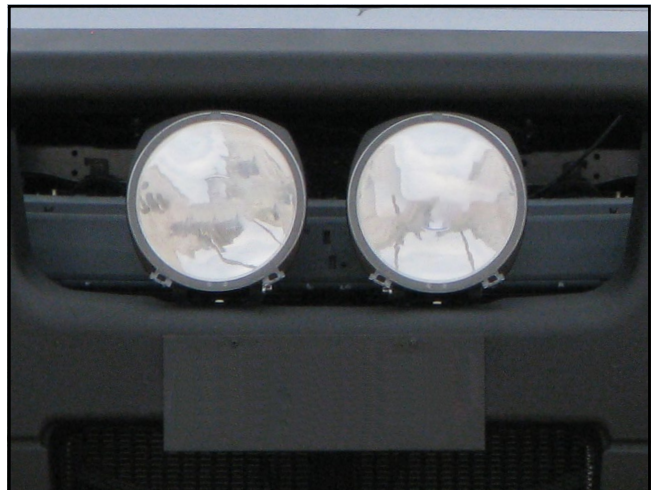
There are antenna mounts incorporated onto the top loops of the bull bar. The SmartBar is supplied with two antenna mounts (000-AMB15 & 000-AMB12), one vertically aligned and the other horizontally. Additional antenna mounts can be purchased:

000-AMB15 (horizontal mount)
000-AMB12 (vertical mount)



Driving Light Mounts:

The SmartBar is supplied with an accessory bracket to mount driving lights, light bars and other accessories.



Winch Mount:

The SmartBar winch bracket kit is winch compatible for winches up to 9,500lb. See overleaf for full winch details.

Please note that the white bar is no longer available, coloured bars are only supplied subject to volume.



Winch Model Fitment:

The SmartBar with winch compatible bracket kit accommodates the following winches:

- Warn M8000, XD9000, XP9.5 and XDC 9.5.
- Warn Magnum 8

The SmartBar is supplied with an accessory bracket that mounts to the bar in front of the grille. With some winches the winch control box can be mounted on the accessory bracket between the spotlights*.

Additional fit kits are required depending on the winch being fitted:

- A flip up number plate bracket is recommended for standard size number plates when SmartBar's are fitted with a winch, ARB Part number 3500630

*Fitment of the control box to the accessory bracket will restrict the size of the lights that can be mounted. Light bars will not fit on accessory bracket at all in this instance.



Light Model Fitment:

The SmartBar accommodates the following Lights:

ARB Intensity:

- ARB Intensity 21

Bushranger Night Hawk lights:

- NHP180 (S&D) (180mm Round LED light)
- NHS055 - NHS205 (5.5 inch to 20.5 inch light bars)

IPF Lights:

- 801/901 Xtreme Sport Series
- 800/900 HID Series
- 800/900 Series
- 900 Xtreme LED Sport Series
- 868/968 Series
- 930 Super Rally

NOTE: If a control box is fitted to the Driving Light Mount Bracket, the lights available to be fitted in the SmartBar will be heavily restricted; and it prevents completely the use of any Light Bar.





PART NUMBER MATRIX

SMARTBAR HOLDEN COLORADO (06/12 - 08/16) & COLORADO 7 (12/12-08/16)

		SmartBar non winch	SmartBar winch
Fitting Times		3 Hours	4 Hours
Holden Colorado ¹	Model (Guide Only)		
4x2 & 4x4	DX, LX, LS, LT, LTZ	SA153BL153	SA153BL154
Fitting Times		3.5 Hours	4.5 Hours
Holden Colorado 7 ¹	Model (Guide Only)		
4x2/4x4	LT & LTZ	SA153BL153	SA153BL154

Please note:

¹ SmartBar isn't compatible with any vehicle fitted with Parking Sensors.