

PRODUCT SPECIFICATIONS

**Publication Date:**

February, 2019

Description:

Ford Ranger PX2 SpartanBar

Application:

Ford Ranger PX2 (2015-07/2018)
XL, XLS, XLT, Limited & Wildtrak

Fitting:

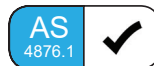
Minimum 3 Hours (Non Winch)
Minimum 4 Hours (Winch)
Minimum 4 Hours
(Winch Recovery Kit)
Minimum 2.5 Hours
(Retro Fit Winch Recovery Kit)

**Available:**

Now



PROUDLY
AUSTRALIAN MADE



Product Specification

Ford have released the Ranger PX2, featuring a number of changes in the visual appearance of the vehicle.

The SpartanBar is designed for the Ford Ranger as a partial bumper replacement, perfectly complementing the design and shape of the vehicle; accommodating most of the factory accessories and all the while providing unparalleled safety.

Designed to suit the XL, XLS, XLT, Limited (Europe) and WildTrak models. The SpartanBar is engineered to be the lightest and safest bumper replacement VFPS available; offering even more protection and safety for Ranger owners and pedestrians.

Protection & Styling Characteristics:

- Meets full Australian Standard AS 4876.1-2002. Including 3.2 Road User Protection
- Weight savings provide improved fuel economy and reduced tyre, suspension and brake wear when compared to other alternatives
- Fitted Weight of **35.5kg for Non Winch**
- Fitted Weight of **40kg for Winch**
- Fitted Weight of **43kg for Winch Recovery Kit**
- Bar adds 180mm to vehicle length
- Air Bag Compatible
- Bumper trim, easily fitted
- Superior frontal protection, due to the impact absorbing hollow construction
- Accepts the original vehicle fog lights (excluding WildTrak models)
- Supplied with Durable LED Parker/Indicator Lights
- Supplied with 2 x Antenna Mounts
- Antenna mount location on loops of the bar, up to 4 available
- UV stabilised polymer for durability and corrosion resistance
- Styled to maintain the Vehicle's aesthetic
- Proudly designed and manufactured in Australia
- Minimal maintenance and repair costs after impact
- Manufactured from environmentally friendly, recyclable polyethylene polymer
- Available in Black as standard, other colours available for large order quantities
- Accommodates a large range of spotlights
- Accommodates up to 9,500lb winch (refer to winch page for winch compatibility)
- Compatible with ARB Recovery Points
- SpartanBar is tested to ensure a HIC (Head Injury Criteria) figure below the Australian Standard rating of 1500, as to provide pedestrians with a higher probability of surviving a low speed impact
- Winch Recovery Point Bracket Kit available. (Refer to matrix for vehicle compatibility)

Adaptive Cruise Control with Forward Collision Alert:

Ford's Ranger PX2 features an Adaptive Cruise Control with Forward Collision Alert as part of an option pack available on the XLT and standard equipment on WildTrak models. The system uses a multi-mode electronic scanning radar to combine a wide mid field of view with long range coverage.

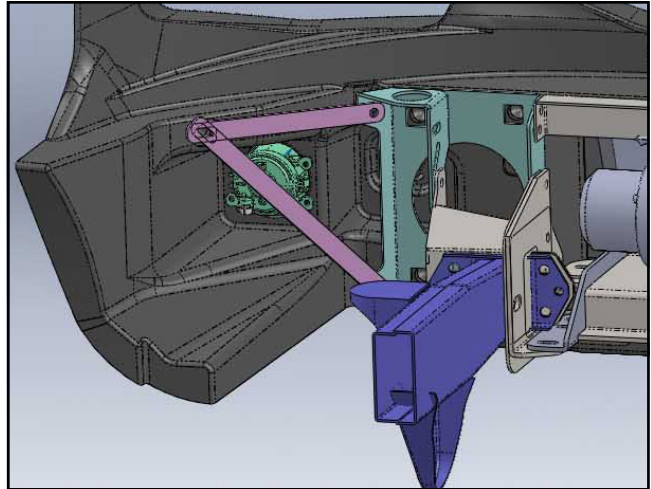
SmartBar's Design and Engineering team have developed the bar to accommodate this factory fitted optional accessory.

Ford have the following disclaimer (via www.ford.com.au) regarding the Adaptive Cruise Control and Forward Collision Warning "driver-assistance features are supplemental and do not replace the driver's judgement. Function may not operate in some driving and road conditions or adverse weather".

Chassis Mounts:

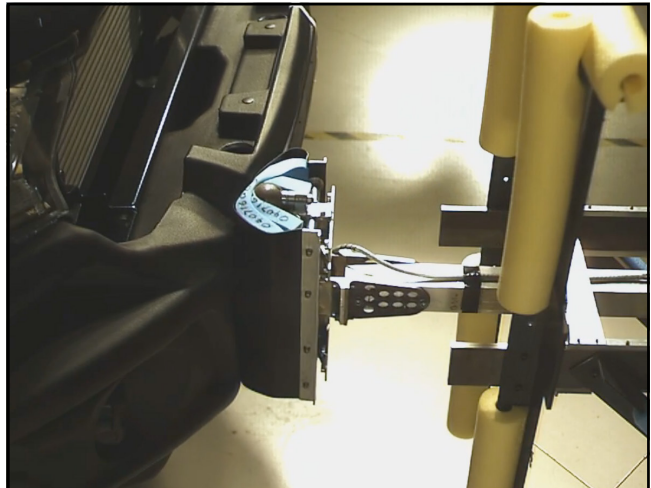
The chassis mount design for the Ford Ranger SpartanBar comprises of a two part construction which allows for three axis adjustability, to achieve a solid and perfect fit every time.

All brackets have been tested and comply with Vehicle Air Bag, Winch Maximum Pull Exertion and Australian Safety Standards.



Pedestrian Safety:

SpartanBar's have been tested and proven to be less likely to cause serious injury to pedestrians than other alternatives. This is due to the hollow construction which allows the bar to absorb most of the impact along with the unique and specifically designed co-polymer material.



Adaptive Cruise:

The SpartanBar in both non-winch and winch version is compatible with the Ford Ranger OE Adaptive Cruise module.

Please note that for winch version, an additional kit is required to be purchased as to relocate the module to the front of the winch frame bracket.

See Matrix for Winch Recovery Kit compatibility with Adaptive Cruise Vehicles.

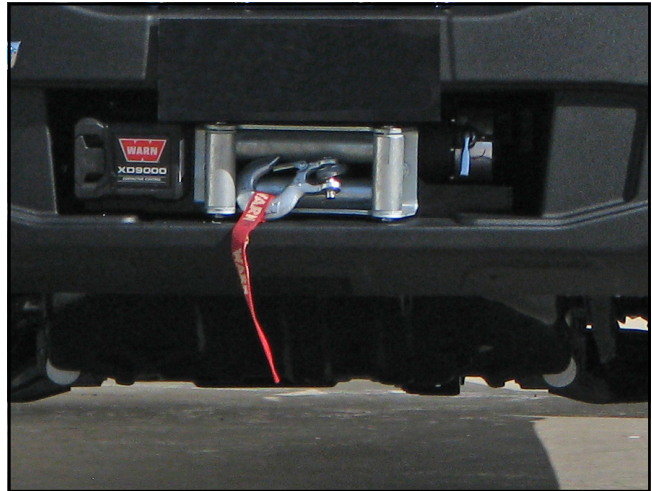
Part Number: SA176-WAK



Winch Mount:

The SpartanBar winch bracket kit is winch compatible for winches up to 9,500lb. See overleaf for full winch details.

Please note that with some winches the control box can be mounted next to the fairlead.



Winch Recovery Kit

The SpartanBar winch recovery kit is winch compatible for winches up to 9,500lb.

When using a bridle strap the winch recovery kit is rated to 8000kg. Each individual side of the recovery point is rated to 4000kg.

The winch recovery kit can be purchased individually as a retro fit kit (SA260RK) for existing SpartanBars.

See winch model fitment page for full winch details.



Antenna Mounts:

There are antenna mount locations in the top loops of the bar. The SpartanBar is supplied with an inner and outer antenna mount bracket. Additional antenna mount brackets can be purchased:

Inner bracket (Vertical Mount): TP44805
Outer bracket (Horizontal Mount): TP50349



Bumper Trim:

The bar is easily fitted as a partial bumper replacement and as such, requires a bumper trim during installation. Instructions are supplied with the bar to assist with fitment.



Plug and Play Harness:

An optional plug and play wiring harness is available for purchase, making the parker/indicator lights installation much simpler and saving on the overall time required to fit the bar to the vehicle.

Part Number: BP80296



LED Parker/Indicators

The SpartanBar is supplied with high quality LED parker/indicator lights as shown here in orange.

Please note the bar is also compatible with the OEM Fog Lights (excluding PX2 WildTrak models), but they are not supplied with the bar.



Optional Fog/DRL:

The original Ranger fog lights are compatible with the SpartanBar; with the exception of XL & WildTrak variants. For XL & WildTrak models SmartBar recommends installing an optional 90mm fog/day time running light combo light (supplied with full wiring harness).

A maximum of 2 x DRL's are permitted to ADR requirements.

Part Number: BP80311



Driving Light Mounts:

The SpartanBar is supplied with an accessory bracket to mount driving lights, light bars and other accessories.

To see further details on light fitment see overleaf.



Ladder Rack:

There is a Ladder rack compatible SpartanBar available for purchase, please refer to Product Matrix for part number information. Please note, the Bar is not compatible with vehicles fitted with Adaptive Cruise Control. In addition, where a Winch is intended to be used, the control box needs to be mounted to the spot light bracket; which may affect fitment of larger spotlights. Ladder rack must be supported with beam from the roof racks, canopy or tray body.



Parking Sensors:

For vehicle models with front parking sensors, the parking sensor kit is required to be purchased.

Part Number: SA232PSK



Winch Model Fitment:

The winch compatible Ford Everest SpartanBar fits the following winches:

- Warn M8000, XD9000¹, XP9.5 and XDC 9.5.
- Warn Magnum 8, 10
- Bushranger DV-9TH, DS9.5TH and Seal 9.5TH¹.
- Bushranger REVO 10¹

The SpartanBar is supplied with an accessory bracket that mounts to the bar in front of the grille. With some winches the winch control box can be mounted on the accessory bracket between the spotlights^{1,3}.

Additional fit kits are required depending on the winch being fitted:

- A flip up number plate bracket is recommended for standard size number plates when SpartanBars are fitted with a winch, ARB Part number 3500630

¹Fitment of the control box to the accessory bracket will restrict the size of the lights that can be mounted. Light bars will not fit on accessory bracket at all in this instance.

²Not Compatible with Winch Recovery Kit

³If installing a Winch Recovery Kit, the Winch control box will need to be relocated to the Accessory Bracket or elsewhere.



Light Model Fitment:

The SpartanBar models accommodates the following Lights:

ARB Intensity:

- ARB Intensity 21
- ARB Intensity Light Bar AR40 (requires pedestal mount)

Bushranger Night Hawk lights:

- NHP180 (S&D) (180mm Round LED light)
- NHS055-NHS245 (5.5 inch to 24.5 inch light bars)

Note: Fitment of a winch control box to the accessory bracket will restrict the size of the lights that can be mounted. Light bars will not fit on accessory bracket at all in this instance.



PART NUMBER MATRIX



SPARTANBAR FORD RANGER PX2 2015-07/2018

		Non Winch	Winch	Winch Recovery Kit ⁵	Retro Fit Winch Recovery Kit ^{5,7}	Parking Sensor Kit	Adaptive Cruise Kit	Optional Fog/ DRL Combo Light ¹	Optional Patch Wiring Harness ²	Optional Flip Up Number Plate Kit ³
Fitting Time		3 Hours	4 Hours	4 Hours	2.5 Hours	45 Mins	30 Mins	30 Mins		15 Mins
Ford Ranger Non Winch	Model (Guide Only)									
No Front Parking Sensors & No Adaptive Cruise	XL	SA175BL175						BP80311	BP80296	
With Front Parking Sensors	XLS, XLT	SA175BL175				SA232PSK			BP80296	
With Front Parking Sensors & Adaptive Cruise	XLT	SA175BL175				SA232PSK			BP80296	
WildTrak with Front Parking Sensors & Adaptive Cruise	WildTrak	SA175BL175				SA232PSK		BP80311	BP80296	

Fitting Time										
Ford Ranger Winch	Model (Guide Only)									
No Front Parking Sensors & No Adaptive Cruise	XL	SA175BL176	SA175BL260 ⁵	SA260RK ^{5,7}				BP80311	BP80296	3500630
Ladder Rack ^{4,5,6}	XL, XLS	SA207BL176LR						BP80311	BP80296	3500630
With Front Parking Sensors	XLS, XLT	SA175BL176	SA175BL260 ⁵	SA260RK ^{5,7}	SA232PSK				BP80296	3500630
With Front Parking Sensors & Adaptive Cruise	XLT	SA175BL176			SA232PSK	SA176-WAK			BP80296	3500630
WildTrak with Front Parking Sensors & Adaptive Cruise	WildTrak	SA175BL176			SA232PSK	SA176-WAK	BP80311	BP80296		3500630

Please note:

¹ XLS & XLT OE fog lights are refitted into the StealthBar. Aftermarket Fog/DRL light kit available for XL & WildTrak (WildTrak OE fog lights are not compatible).

² Only suitable for wiring standard parker/indicator lights supplied with bar. Will speed up and simplify the light installation, saving on the overall time required to fit the bar to the vehicle.

³ Flip Up Number Plate Kit (ARB part number 3500630) is recommended for winch bars with standard size number plates.

⁴ Ladder rack available for XL & XLS winch model only. The winch control box needs to be mounted to the spot light bracket, which can affect fitment of larger spotlights. The ladder rack must also be supported with a beam from the roof racks, canopy or tray body and adds an additional 21.5kg to the fitted weight of the winch compatible SpartanBar (i.e. 61.5kg total fitted weight including bar, bracket kit and ladder rack). The addition of the Ladder Rack to the SpartanBar will affect the pedestrian safety of the product.

⁵ Not compatible with Adaptive Cruise Vehicles.

⁶ Pedestrian Safety factors of bar are mitigated.

⁷ Not required for new bar installations. Only required for retro fit to vehicles with winch bar already installed.