

PRODUCT SPECIFICATIONS



Publication Date:
September, 2018

Description:
Toyota HiLux StealthBar

Application:
Toyota HiLux 2015+ Models

Fitting:
Minimum 3 Hours (Non Winch)
Minimum 4 Hours (Winch)
Refer Matrix for Accessory Fitup

Available:
Now



Product Specification

In August 2018 Toyota released the facelift models of their latest generation HiLux, reinvigorating the range with an updated bumper and grille design.

Designed specifically to suit the 2018 HiLux facelift, while also fitting the 2015+ models. SmartBar's new model of Vehicle Frontal Protection System, the StealthBar, perfectly complements the design and shape of the vehicle and has been designed to suit both the pre and post facelift HiLux models (see matrix for full model specific fitment information).

The StealthBar has been engineered to be the lightest and safest VFPS available, offering even more protection and safety to vehicle owners and importantly, pedestrians.

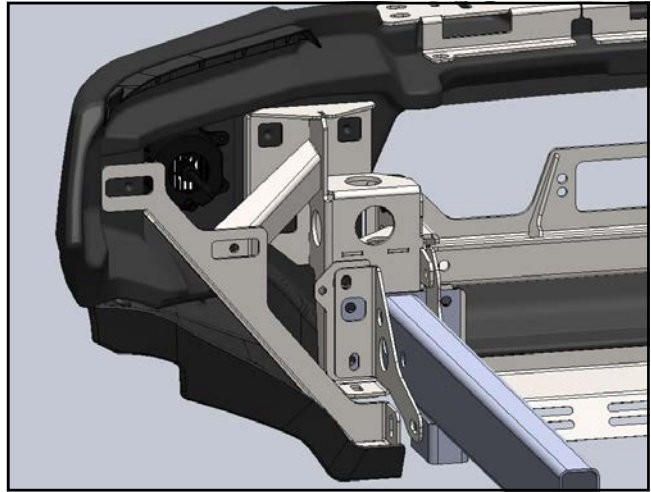
Protection & Styling Characteristics:

- Meets full Australian Standard AS 4876.1-2002. Including 3.2 Road User Protection
- Weight savings provide improved fuel economy and reduced tyre, suspension and brake wear when compared to other alternatives
- Fitted Weight of **28kg for Non Winch**
- Fitted Weight of **36kg for Winch**
- Bar adds 120mm to vehicle length
- 30° approach angle on high ride vehicle
- Air Bag Compatible
- Bumper trim required on 09/15 - 07/18
- Bumper replacement with grille trim on 08/2018+ facelift
- Superior frontal protection, due to the impact absorbing hollow construction
- Antenna mount location on top of the accessory bracket
- UV stabilised polymer for durability and corrosion resistance
- Styled to maintain the Vehicle's aesthetic
- Proudly designed and manufactured in Australia
- Minimal maintenance
- Minimal repair costs after impact
- Manufactured from environmentally friendly, recyclable polyethylene polymer
- Available in Black as standard, other colours available for large order quantities
- Accommodates a large range of spotlights
- Accommodates up to 10,000lb Winch
- Compatible with ARB Under Vehicle Protection
- Compatible with ARB Recovery Points
- Compatible with OE fog lights
- Compatible with SmartBar All in 1 Light
- High Lift Jack point available as an option with winch bars

Chassis Mounts:

The chassis mounts are designed to be easily fitted to the vehicle, reducing fitting time. The single part construction allows for three axis adjustability, to achieve a solid and perfect fit every time.

All brackets have been tested and comply with Vehicle Air Bag compatibility, Winch Maximum Pull Exertion and Australian Safety Standards.



Pedestrian Safety:

SmartBar's have been tested and proven to be less likely to cause serious injury to pedestrians than other alternatives. This is due to the hollow construction which allows the bar to absorb most of the impact along with the unique and specifically designed co-polymer material.



Underwing Panel Kit:

The under wings are designed to provide even more protection to the under body of the Toyota HiLux outside of the chassis rails.

The under wing panels are compatible with the ARB UVP and ARB recovery points.



Under Vehicle Protection:

The HiLux StealthBar in both winch and non winch configurations, is compatible with the ARB Under Vehicle Protection (UVP).



Recovery Point:

The HiLux StealthBar in both winch and non winch configurations, is compatible with the ARB recovery points to assist with vehicle recovery. Shown in Red here.



Driving Light Mounts:

The StealthBar is supplied with an accessory bracket to mount driving lights, light bars and other accessories.

The mount includes pinning holes for the Intensity lights.

To see further details on light fitment see page 8.



Winch Mount:

The StealthBar winch bracket kit is compatible for winches up to 10,000lb. See page 7 for full winch details.

A flip up number plate bracket is recommended for standard size number plates when SmartBar's are fitted with a winch, ARB Part number 3500630.

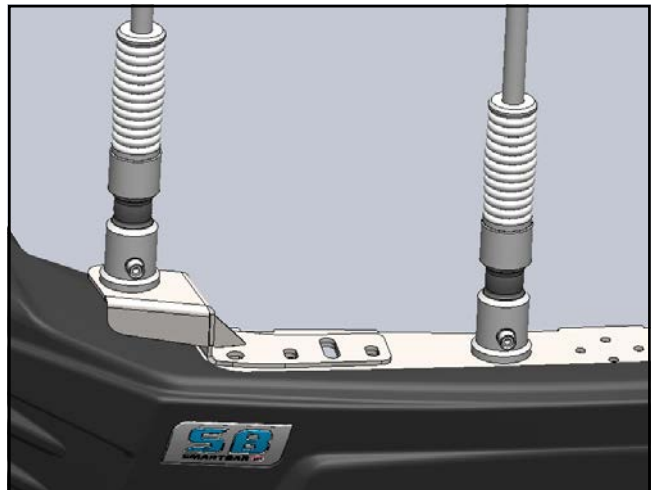


Antenna Mounts:

Antenna / Sand Flag mounts are conveniently located in the centre of the StealthBar for a single antenna. Additional antenna mounts can be purchased separately and attached to the accessory bracket.

Part number: SA190AR - RH Side

Part number: SA190AL - LH Side



High Lift Jack Point:

The StealthBar winch bracket kit fits the High Lift Jack point.

High Lift Jack point sold as optional extra.

Part number: SAHLJ1



High Lift Jack:

The High Lift Jack point is compatible with ARB's Jack and standard High Lift Jack'.



SmartBar All in 1 Light option:

The SmartBar All in 1 Light can be fitted as an option. This light has a driving light, daytime running light (a maximum of 2 x DRL's are permitted to ADR requirements), fog light, parking light and indicator.

Complete functionality is optional but may require additional wiring. See matrix for details.

The All in 1 Light comes with a 5 year warranty.

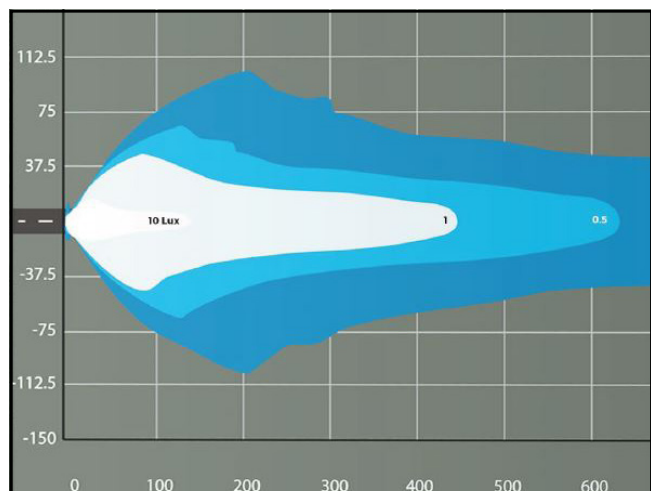


SmartBar All in 1 Light functions:

Driving light function can be added to the All in 1 Light with additional wiring kits.

ARB Driving Light Wiring Loom (3500520) will be required.

On vehicles not fitted with fog lights ARB Fog Light Wiring Loom (3500530) will be required.



Winch Model Fitment:

The SmartBar winch compatible bracket kit accommodates the following winches:

- Warn ZEON 8, 8-S, 10, 10-S
- Warn ZEON Platinum 10 and 10-S
- Warn Magnum 8 and 10lb
- Bushranger DV-9TH, DS9.5TH and Seal 9.5TH
- Bushranger Revo 10lb
- Smittybilt X20 10lb

The SmartBar is supplied with an accessory bracket that mounts to the bar in front of the grille. With some winches the winch control box can be mounted on the accessory bracket between the spotlights*.

Additional fit kits are required depending on the winch being fitted:

- A flip up number plate bracket is recommended for standard size number plates when SmartBar's are fitted with a winch, ARB Part number 3500630.
- Warn ZEON Platinum fitment may require part No. W94288 Enhanced Signal Kit.

*NOTE: If a control box is fitted to the Driving Light Mount Bracket, the lights available to be fitted in the SmartBar will be heavily restricted; and it prevents completely the use of any Light Bar.



Light Model Fitment:

The SmartBar for the Toyota HiLux models accommodates the following lights:

ARB Intensity:

- ARB Intensity 21
- ARB Intensity 32

Bushranger Night Hawk lights:

- NHP180 (S&D) (180mm Round LED light)
- NHS055-NHS245 (5.5 inch to 20.5 inch light bars)

IPF Lights:

- 801/901 Xtreme Sport Series
- 800/900 HID Series
- 800/900 Series
- 900 Xtreme LED Sport Series
- 868/968 Series
- 930 Super Rally
- note: IPF rectangular lights will not fit with antenna/sand flag bracket

NOTE: If a control box is fitted to the Driving Light Mount Bracket, the lights available to be fitted in the SmartBar will be heavily restricted; and it prevents completely the use of any Light Bar.



PART NUMBER MATRIX



STEALTHBAR TOYOTA HILUX 2015+

Fitting Time	3 Hours	4 Hours	1 Hour	25 mins	90 mins	90 mins	15mins	15mins
4x2 Toyota HiLux Model (Guide Only)								
4x2 (Narrow Body)	NA	NA	NA	NA	NA	NA	NA	NA
4x2 High-Rider (Wide Body) ¹	SA190BL190	NA	SAALK ⁶	SA190LBK ⁸	3500530 ⁹	SA190AR	SA190AL	NA
4x2 High-Rider (Wide Body) ¹	SA190BL190	NA	SAALK ⁶	SA190LBK ⁸	NA	SA190AR	SA190AL	NA
4x4 Toyota HiLux Model (Guide Only)								
4x4 (Narrow Body) ⁵	NA	NA	NA	NA	NA	NA	NA	NA
4x4 (Wide Body) ⁷	SA190BL190	SA190BL191	SAALK ⁶	SA190LBK ⁸	3500520 ¹⁰	SA190AR	SA190AL	SAHLJ1 ⁷
4x4 (Wide Body) ¹	SR, WorkMate ¹ , SR ⁵ , Rogue ⁴	SA190BL190	SAALK ⁶	SA190LBK ⁸	3500520 ¹⁰	SA190AR	SA190AL	SAHLJ1 ⁷

Please note:

- ¹ Bumper trim is required for pre-08/2018 models and 08/2018+ WorkMate models
- ² 4x2 (Non High-Rider) WorkMate Single-Cab and Double-Cab are narrow body only StealthBar fitment is yet to be confirmed
- ³ 4x2 Hi-Rider SR comes in both Extra-Cab and Double-Cab
- ⁴ For SR5 & Rogue models fitment of OE LED fog lamp is yet to be confirmed
- ⁵ Only Narrow Body 4x4 option is the Single-Cab SR and WorkMate, StealthBar fitment is yet to be confirmed
- ⁶ Only available in black, other colour options available in larger quantities
- ⁷ Optional High Lift Jack Point compatible with winch kit only
- ⁸ Bracket kit SA190LBK is required to fit SmartBar All in 1 Light
- ⁹ To use fog light function on the SmartBar All in 1 Light ARB Fog Light Wiring Loom (3500530) is required
- ¹⁰ To use driving light function on the SmartBar All in 1 Light ARB Driving Light Wiring Loom (3500520) is required, this loom can also be used to fit additional spot lights