

# PRODUCT SPECIFICATIONS



**Publication Date:**  
November, 2018

**Description:**  
Isuzu D-Max/MU-X SpartanBar

**Application:**  
Isuzu D-Max 2017+ Models  
Isuzu MU-X 2017+ Models

**Fitting:**  
Minimum 3 Hours (Non Winch)  
Minimum 4.5 Hours (Winch)  
Refer Matrix for Accessory Fitup

**Available:**  
Now



## Product Specification

In early 2017 Isuzu released their new D-Max and MU-X model variant's. The D-Max is offered in either a wide or narrow body design, with the 4x2 vehicles having additional low and high ride options. The team at SmartBar has now finished development on a new frontal protection system styled to accomodate most of the range.

Specifically designed for the 2017+ Isuzu D-Max and MU-X as a partial bumper replacement, the latest model of SmartBar's Vehicle Frontal Protection System (VFPS) perfectly complements the design and shape of the vehicle. The SpartanBar maintains all of the factory accessories (excluding MU-X fog lights) and all the while provides unparalleled safety.

Designed to suit the SX (including Low Ride), EX, LS-M and LS-U D-Max models and the LS-M, LS-U and LS-T MU-X models, the SpartanBar is engineered to be the lightest and safest VFPS available; offering even more protection and safety for D-Max and MU-X owners and pedestrians.

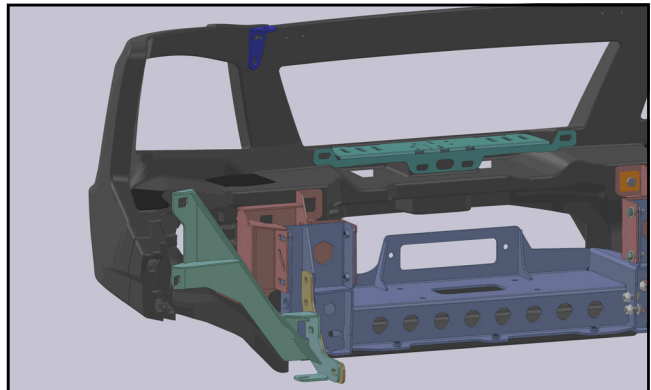
## Protection & Styling Characteristics:

- Meets full Australian Standard AS 4876.1-2002. Including 3.2 Road User Protection
- Weight savings provide improved fuel economy and reduced tyre, suspension and brake wear when compared to other alternatives
- Fitted Weight of **36kg for Non Winch**
- Fitted Weight of **46kg for Winch & Winch Recovery**
- Bar adds an approximate additional 230mm to vehicle length
- 27° approach angle on high ride vehicle with bar fitted
- Air Bag Compatible
- Bumper trim, easily fitted
- Superior frontal protection, due to the impact absorbing hollow construction
- Accepts the original D-Max vehicle fog lights, additional bracket kit required to facilitate fitment (MU-X fog lights not compatible)
- Supplied with durable Day Time Running Lights (LS-M, LS-U, LS-T models only)
- Durable LED Parker/Indicator Lights
- Supplied with 1 x Antenna Mount
- Antenna mount locations are found behind the loops of the bar, up to 4 available
- UV stabilised polymer for durability and corrosion resistance
- Styled to maintain the Vehicle's aesthetic
- Proudly designed and manufactured in Australia
- Minimal maintenance
- Minimal repair costs after impact
- Manufactured from environmentally friendly, recyclable polyethylene polymer
- Available in Black as standard, other colours available for large order quantities
- Accommodates a large range of spotlights
- Accommodates up to 12,000lb Winch
- Compatible with ARB Under Vehicle Protection
- Compatible with ARB Recovery Points using kits: SA228RL (LHS), SA228RR (RHS) and SA228BK (both sides).
- SpartanBar is tested to ensure a HIC (Head Injury Criteria) figure below the Australian Standard rating of 1500, as to provide pedestrians with a higher probability of surviving a low speed impact

## Chassis Mounts:

The chassis mount design for the D-Max/MU-X 2017+ series SpartanBar comprises of a two part construction which allows for three axis adjustability, to achieve a solid and perfect fit every time.

All brackets have been tested and comply with Vehicle Air Bag, Winch Maximum Pull Exertion and Australian Safety Standards.



## Pedestrian Safety:

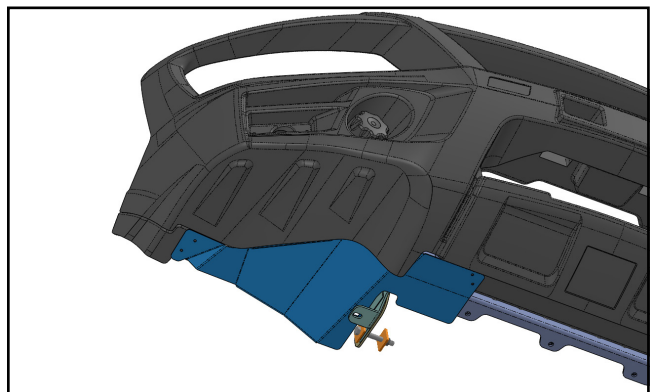
SpartanBar's have been tested and proven to be less likely to cause serious injury to pedestrians than other alternatives. This is due to the hollow construction which allows the bar to absorb most of the impact along with the unique and specifically designed co-polymer material.



## Underwing Panel Kit:

The optional under wing panel kit is designed to provide even more protection to the under body of the D-Max / MU-X outside of the chassis rails.

The under wing panels are compatible with the ARB UVP and ARB Recovery Points.



## Recovery Point:

The D-Max/MU-X Spartan, in winch configurations, is compatible with the ARB recovery points to assist with vehicle recovery. Shown in Red here.

Please note that fitting these recovery points requires a specific bracket kit. The recovery points can be installed on one or both sides.

Kits: SA228RL (LHS), SA228RR (RHS) and SA228BK (both sides).



## Under Vehicle Protection:

The D-Max/MU-X SpartanBar in both winch and non winch configurations, is compatible with the ARB Under Vehicle Protection (UVP).



## Day Time Running Lights:

The SpartanBar design incorporates high quality Hella Day Time Running Lights (DRL) to provide additional safety when driving during daylight hours. The DRL is designed to turn on with the vehicle ignition and off when the vehicle parker lights are turned on.

DRL's are supplied as standard for the LS-U & LS-M model variant SpartanBar, and are an optional accessory for other models.



## Fog Lights:

The original D-Max fog lights are compatible with the SpartanBar. Please note that an additional bracket kit is required (SA203FBK) to be purchased to facilitate the installation of the fog lights to the bar.

The MU-X OEM Fog Lights are not compatible therefore an aftermarket foglight kit is optioned;

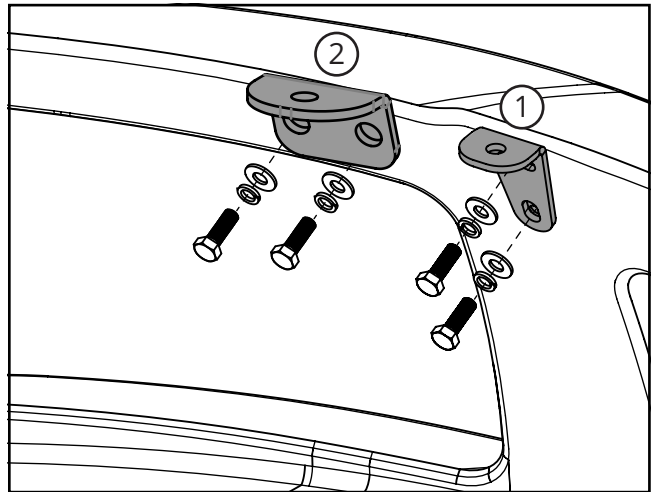
Part Number: SA203AFK



## Antenna Mounts:

There are antenna mounts incorporated on the top loops of the bull bar. The SpartanBar is supplied with a single antenna mount. Additional antenna mounts can be purchased:

1. Vertical Mount: TP44928 (supplied)
2. Horizontal Mount: TP44799 (optional extra)



## Driving Light Mounts:

The SpartanBar is supplied with an accessory bracket to mount driving lights, light bars and other accessories.

The mount includes pinning holes for the Intensity lights.

To see further details on light fitment see page 8.



## Winch Mount:

The SpartanBar winch bracket kit is winch compatible for winches up to 12,000lb. See page 7 for full winch details.



## Winch Model Fitment:

The SpartanBar for the Isuzu D-Max/MU-X winch compatible bracket kit accommodates the following winches:

- Warn M8000, XD9000, XP9.5 and XDC 9.5.
- Warn ZEON 8, 8-S, 10, 10-S, 12.
- Warn ZEON Platinum 10, 10-S and 12.
- Warn Magnum 8, 10 and 12lb
- Bushranger DV-9TH, DS9.5TH and Seal 9.5TH

The SpartanBar is supplied with an accessory bracket that mounts to the bar in front of the grille. With some winches the winch control box can be mounted on the accessory bracket between the spotlights\*.

Additional fit kits are required depending on the winch being fitted:

- A flip up number plate bracket is recommended for standard size number plates when SpartanBars are fitted with a winch, ARB Part number 3500630.
- Warn ZEON Platinum fitment may require part No. W94288 Enhanced Signal Kit.

\*Fitment of the control box to the accessory bracket will restrict the size of the lights that can be mounted. Light bars will not fit on accessory bracket at all in this instance.



## Light Model Fitment:

The SpartanBar for the Isuzu D-Max/MU-X models accommodates the following Lights:

### ARB Intensity:

- ARB Intensity 21
- ARB Intensity Light Bar AR40 (requires pedestal mount)

### Bushranger Night Hawk lights:

- NHP180 (S&D) (180mm Round LED light)
- NHS055-NHS245 (5.5 inch to 24.5 inch light bars)

### IPF Lights:

- 801/901 Xtreme Sport Series
- 800/900 HID Series
- 800/900 Series
- 900 Xtreme LED Sport Series
- 868/968 Series
- 930 Super Rally

NOTE: If a control box is fitted to the Driving Light Mount Bracket, the lights available to be fitted in the SpartanBar will be heavily restricted; and it prevents completely the use of any Light Bar.



# PART NUMBER MATRIX



## SPARTANBAR ISUZU D-MAX/MU-X 2017+

		SpartanBar Non Winch	SpartanBar Winch	SpartanBar Winch to suit ARB Recovery Points <sup>8</sup>	Aftermarket Foglight Kit <sup>6</sup>	Optional Day Time Running Lights	OE Fog Light Bracket Kit	Underwing Panel Kit	Retro Fit Recovery Kit LHS <sup>5</sup>	Retro Fit Recovery Kit RHS <sup>5</sup>
<b>Fitting Time</b>		3 Hours	4.5 Hours	4.5 Hours	15 Minutes	30 Mins	15 Mins	15 Mins	2 Hours	2 Hours
<b>4x2</b>	Model (Guide Only)									
4 x 2 D-Max High Ride (Wide Body)	SX <sup>2</sup>	SA209BL203	SA209BL204	SA209BL228	SA203AFK (Optional)	BP80052	N/A <sup>3</sup>	SA203UWK	SA228RL	SA228RR
4 x 2 D-Max High Ride (Wide Body)	LS-U	SA203BL203	SA203BL204	SA203BL228	SA203AFK (Optional)	N/A (Included) <sup>1</sup>	SA203FBK	SA203UWK	SA228RL	SA228RR
4 x 2 MU-X (Wide Body)	LS-M	SA203BL203	SA203BL204	SA203BL228	SA203AFK (Optional)	N/A (Included) <sup>1</sup>	N/A <sup>3</sup>	SA203UWK	SA228RL	SA228RR
4 x 2 MU-X (Wide Body)	LS-U, LS-T	SA203BL203	SA203BL204	SA203BL228	SA203AFK <sup>7</sup>	N/A (Included) <sup>1</sup>	N/A <sup>4</sup>	SA203UWK	SA228RL	SA228RR
<b>4x4</b>	Model (Guide Only)									
4 x 4 D-Max High Ride (Wide Body)	EX, SX	SA209BL203	SA209BL204	SA209BL228	SA203AFK (Optional)	BP80052	N/A <sup>3</sup>	SA203UWK	SA228RL	SA228RR
4 x 4 D-Max High Ride (Wide Body)	LS-M, LS-U	SA203BL203	SA203BL204	SA203BL228	SA203AFK (Optional)	N/A (Included) <sup>1</sup>	SA203FBK	SA203UWK	SA228RL	SA228RR
4 x 4 MU-X High Ride (Wide Body)	LS-M	SA203BL203	SA203BL204	SA203BL228	SA203AFK (Optional)	N/A (Included) <sup>1</sup>	N/A <sup>3</sup>	SA203UWK	SA228RL	SA228RR
4 x 4 MU-X High Ride (Wide Body)	LS-U, LS-T	SA203BL203	SA203BL204	SA203BL228	SA203AFK <sup>7</sup>	N/A (Included) <sup>1</sup>	N/A <sup>4</sup>	SA203UWK	SA228RL	SA228RR

Please note:

<sup>1</sup> SpartanBar for all D-Max LS-M, LS-U models and all MU-X models is supplied with DRL as standard

<sup>2</sup> Only SX Narrow Body vehicles are the Single Cab Chassis and Crew Cab Ute Low Ride Models, SpartanBar is not compatible with Narrow Body

<sup>3</sup> Vehicle models don't come with Fog Lights from Manufacturer

<sup>4</sup> MU-X OEM Fog Lights aren't compatible with the fog light bracket kit and therefore aren't able to be fitted to the SpartanBar, for this vehicles see note 7 [below]

<sup>5</sup> Retrofit recovery kit can only be fitted to Winch compatible SpartanBar SA203BL204 or SA209BL204.

<sup>6</sup> Does not include wiring harness

<sup>7</sup> SA203AFK is required MU-X LS-U and LS-T models. OE foglights are not compatible with the SpartanBar

<sup>8</sup> Must fit both LHS and RHS Recovery Points with this bar and kit.