

PRODUCT SPECIFICATIONS

**Publication Date:**

March, 2019

Description:

Mitsubishi Pajero Sport
SpartanBar 01/20+

Application:

Mitsubishi Pajero Sport 20+

Fitting:

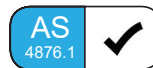
Minimum 4 Hours (Non Winch)
Minimum 5 Hours (Winch)
Refer Matrix for Accessory Fitup

Available:

Now



PROUDLY
AUSTRALIAN MADE



Product Specification

The new styling of Mitsubishi's recently released Pajero Sport offers many new design features over the previous release. SmartBar's SpartanBar has been designed to compliment the vehicle styling while maintaining the safety features of the vehicle.

The SpartanBar's Vehicle Frontal Protection System (VFPS) is a partial bumper replacement and is designed to suit all model variants (GLX, GLS and Exceed).

The SpartanBar is engineered to be the lightest and safest VFPS available; offering even more protection and safety for vehicle owners and importantly pedestrians.

Compatible with all the Pajero Sport safety features including; front parking sensors, Forward Collision Mitigation (FCM), Blind Spot Warning (BSW), Lane Change Assist (LCA), Ultrasonic Misacceleration Mitigation System (UMS), Adaptive Cruise Control (ACC) and Multi Around Monitor (MAM) which includes a front camera.

Protection & Styling Characteristics:

- Meets full Australian Standard AS 4876.1-2002. Including 3.2 Road User Protection
- Weight savings provide improved fuel economy and reduced tyre, suspension and brake wear when compared to other alternatives
- Fitted Weight of **30kg for Non Winch**
- Fitted Weight of **43kg for Winch**
- Bar adds 194mm to vehicle length
- 25° approach angle at centre
- Air Bag Compatible
- Bumper trim, easily fitted
- AHC Structure (Absorbing Hollow Core) provides superior frontal protection
- Aftermarket fog light kit required for all models (GLX, GLS and EXCEED)
- Supplied with 1x antenna mount
- Includes antenna bracket mount location on the bar, up to 4 available
- Reinforced heavy duty antenna mount / flag mount available as an option
- Includes moulded underwing protection
- UV stabilised polymer for durability and corrosion resistance
- Styled to maintain the vehicle's aesthetic
- Proudly designed and manufactured in Australia
- Minimal maintenance
- Minimal repair costs after impact
- Manufactured from environmentally friendly, recyclable polyethylene polymer
- Available in black as standard, other colours available for large order quantities
- Accommodates up to 10,000lb winch
- Accommodates a large range of spotlights
- Compatible with ARB under vehicle protection (UVP)
- Optional recovery point (right hand side only) available for winch kit only
- Compatible with front parking sensors
- Compatible with front parking camera (part of the Multi Around Monitor). Camera relocation kit required
- Compatible with Forward Collision Mitigation (FCM)^{1,2}, Ultrasonic Misacceleration Mitigation System (UMS)¹, Multi Around Monitor (MAM)¹, front parking sensors and front camera
- This SpartanBar is tested to ensure a HIC (Head Injury Criteria) figure below the Australian Standard rating of 1500, as to provide pedestrians with a higher probability of surviving a low speed impact

¹ Please ensure that customers are aware that driver assistance features are supplemental and do not replace the driver's judgement. Full safety feature functions may not operate in some driving conditions and road conditions or adverse weather. Please refer to vehicle owners manual for full details on safety system functionality.

² Please ensure that no accessories (light bars or winch control boxes) are mounted centrally on the accessories bracket as this will interfere with the safety system on this vehicle.

Accessories Mount:

The SpartanBar is supplied with an accessory bracket to mount driving lights only.

Note: No accessories such as light bars or control boxes can be mounted centrally as this will interfere with the vehicle's safety systems.

For further details on light fitment see page 10.



Winch Mount:

The SpartanBar winch bracket kit is compatible with winches up to 10,000lb.

See page 9 for full winch details.

A flip up number plate bracket is recommended for standard size number plates with winch bars. ARB part number 3500630.

Note: Control box cannot be mounted centrally on accessories bracket.



Under Vehicle Protection:

The SpartanBar in both winch and non winch configurations, is compatible with the ARB under vehicle protection (UVP) as shown.



Parking Sensors:

Exceed Model Only;

Vehicles fitted with parking sensors have the parking sensors relocated to the bar.

When parking sensors are to be fitted the specific bars below are required.

Part Number: SA239BL237 Standard

Part Number: SA239BL238 Winch



Camera Relocation:

Vehicles fitted with Multi Around Monitor (MAM) (EXCEED variant only) include a front camera in the lower grille.

For standard SpartanBars, the camera is relocated centrally (pictured). For winch install SpartanBars, the camera is relocated off centre.



Recovery Point:

Optional recovery points (right hand side only) to assist with vehicle recovery. Available for winch kit only. Rated to 8000kg.

The SpartanBar is not compatible with the ARB recovery points.

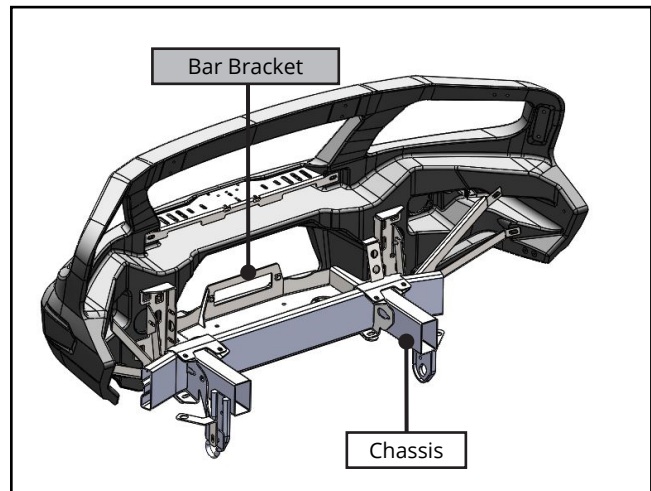
Part Number: SA238RPR



Chassis Mounts:

The chassis mount design allows for three axis adjustability while supporting the chassis and providing superior rigidity to the bar.

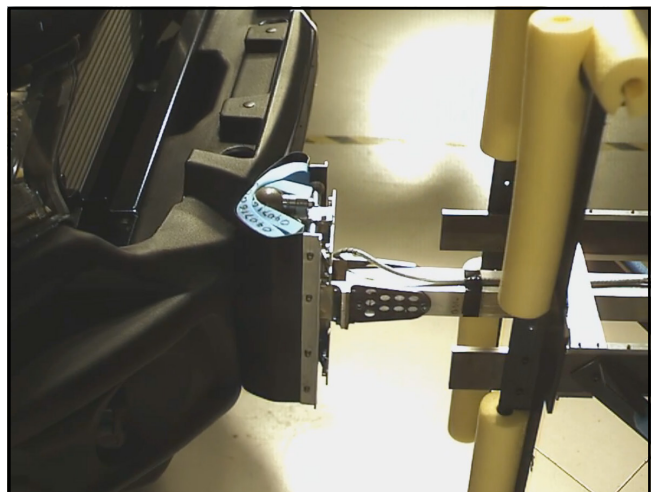
All brackets have been tested and comply with Vehicle Air Bag compatibility, Winch Maximum Pull Exertion and Australian Safety Standards.



Pedestrian Safety:

SmartBar's have been tested and proven to be less likely to cause serious injury to pedestrians than other alternatives. This is due to the hollow construction along with the unique and specifically designed co-polymer material which allows the bar to absorb most of the impact.

This SpartanBar is tested to ensure a HIC (Head Injury Criteria) figure below the Australian Standard rating of 1500.



Underwing Panels:

The under wings are designed to provide even more protection to the under body of the Mitsubishi Pajero Sport outside of the chassis rails.

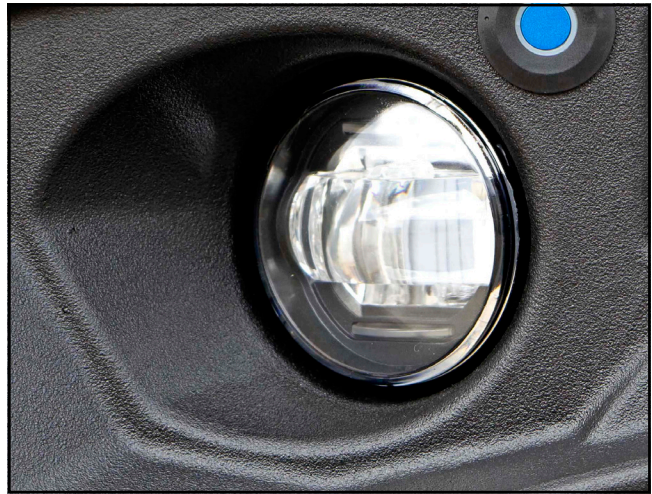
The under wing panels are compatible with the ARB UVP.



Aftermarket Fog Light Kit:

For all trim levels on the Pajero Sport, aftermarket fog light kit is required.

Part Number: BP80557



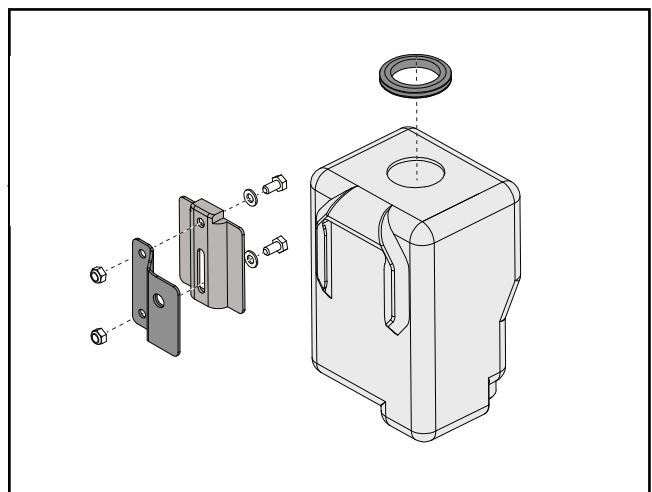
Parker / Indicator Lights:

The SpartanBar is supplied with LED parker / indicator lights.




Windscreen Washer Bottle:

A replacement windscreen washer bottle is supplied with the SpartanBar to improve the approach angle in front of the wheels to improve offroad capabilities.



Inner Antenna Mounts:

The antenna bracket mount locations are incorporated into the top loops of the SpartanBar. The SpartanBar is supplied with a single antenna mount kit (SAAMB12) which mounts to the inner mounting position. This can be mounted either RHS or LHS. A second bracket can be purchased if required.

 Large antennas are not recommended for fitment to the drivers side antenna mount.

Part number: SAAMB12



Antenna Outer Mounts:

An additional antenna mount kit can be purchased for mounting to the outer mounting position. This can be mounted either RHS or LHS.

 Large antennas are not recommended for fitment to the drivers side antenna mount.

Part number: TP44799



Flag Mounts (Heavy Duty):

For larger antenna and flag mount applications, SmartBar offer a reinforced mounting kit which mounts to the inner mounting position on the left hand side only.

Part number: SA237FML - LH Side Only



All Variant Compatibility

The SpartanBar is compatible with all models of the Pajero Sport MY 20+ including the GLX, GLS and Exceed (pictured).

See product matrix for further details.



Winch Model Fitment:

This winch compatible SpartanBar accommodates the following winches:

Warn ZEON 8, 8-S, 10, 10-S

Warn ZEON Platinum 10 and 10-S

Warn Magnum 10lb

Warn M8000¹, XD9000¹, XP9.5¹ and XDC 9.5¹

Bushranger DV-9TH¹, DS9.5TH¹ and Seal 9.5TH¹

Bushranger Revo 10lb¹

Smittybilt X20 10lb

¹ The control box must be removed from the winch and mounted in another location on the vehicle.

IMPORTANT: Do not mount Control boxes centrally on the accessory mount in front of the grille, as they will effect the safety features of this vehicle.



Light Model Fitment:

This model of SmartBar accommodates the following Lights:

ARB Intensity:

- ARB Intensity 21
- ARB Intensity 32

Bushranger Night Hawk lights:

- VLI Series driving lights
- NHP180 (S&D) (180mm Round light)

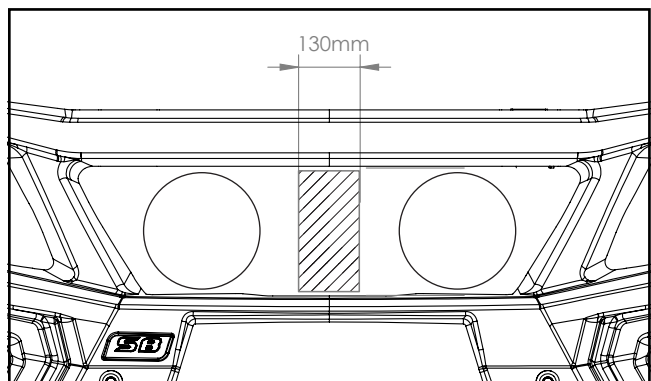
IPF Lights:

- 801/901 Xtreme Sport Series
- 800/900 HID Series
- 800/900 Series
- 900 Xtreme LED Sport Series
- 868/968 Series
- 930 Super Rally

IMPORTANT: Do not mount Light bars on the accessory mount in front of the grille, as they could effect the safety features of this vehicle.



A 130mm window must remain central between spotlights mounted on the accessories bracket so it does not interfere with the radar.



PART NUMBER MATRIX



SPARTANBAR MITSUBISHI PAJERO SPORT 01/20+

Fitting Time	4 Hours ¹	5 Hours ¹	30 Mins	15 mins	15 mins	15 mins	15 mins	15 mins	30 mins
Mitsubishi Pajero Sport Non-Winch	Model (Guide Only)								
Non Front Parking Sensor & No Front Camera	GLX, GLS	SA237BL237	BP80557	SA237FML	SAAMB12	TP44799			
With Front Parking Sensor & Front Camera ¹	EXCEED	SA239BL237	BP80557	SA237FML	SAAMB12	TP44799			
Fitting Time									
Mitsubishi Pajero Sport Winch	Model (Guide Only)								
Non Front Parking Sensor & No Front Camera	GLX, GLS	SA237BL238	BP80557	SA237FML	SAAMB12	TP44799	3500630	SA238RPR	
With Front Parking Sensor & Front Camera ¹	EXCEED	SA239BL238	BP80557	SA237FML	SAAMB12	TP44799	3500630	SA238RPR	

Please note:

- ¹ Allow an additional hour fitment time for parking sensor vehicles (SA239 models).
- ² Required for all models.
- ³ Bar supplied with 1x SAAMB12 kit. Listed kits are for the option of an additional kit.
- ⁴ Flip Up Number Plate Kit is recommended for winch bars with standard size number plates.
- ⁵ Optional recovery point (right hand side only) available for winch kit only.