

PRODUCT SPECIFICATIONS

**Publication Date:**

October, 2021

Description:

Toyota HiLux StealthBar

Application:

Toyota HiLux 06/2020+

Fitting:

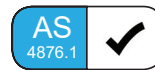
Minimum 3 Hours (Non Winch)

Minimum 4 Hours (Winch)

Refer Matrix for Accessory Fitup

Available:

Now



Product Specification

Toyota has released the long-awaited facelift models of their latest generation HiLux, reinvigorating the range with an updated bumper and grille design.

The Hilux StealthBar has been tested and fitment is confirmed for the 2020+ facelift models Workmate, SR and SR5 (see matrix for full model specific fitment information). Maintaining all of the Hilux safety systems and driver aids such as the Lane Departure Assist and Lane Tracing (LDA), Pre-Collision System (PCS), Road Sign Assist (RSA) and Dynamic Radar Cruise Control (Adaptive Cruise) (DRCC).

The StealthBar has been engineered to be the lightest and safest VFPS available, offering even more protection and safety to vehicle owners and importantly, pedestrians. It has also been updated to be compatible with Front Parking Sensors.

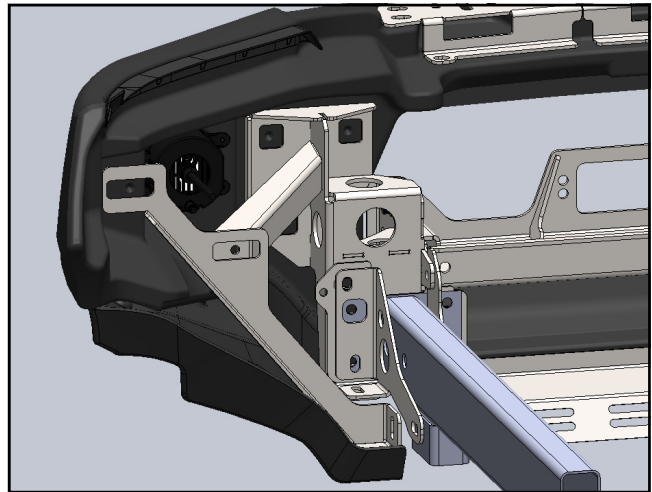
Protection & Styling Characteristics:

- Meets full Australian Standard AS 4876.1-2002. Including 3.2 Road User Protection
- Weight savings provide improved fuel economy and reduced tyre, suspension and brake wear when compared to other alternatives
- Fitted Weight of **28kg for Non Winch**
- Fitted Weight of **36kg for Winch**
- Bar adds 120mm to vehicle length
- 30° approach angle on high ride vehicle
- Air Bag Compatible
- Bumper trim required on 09/15 - 07/18
- Bumper replacement with grille trim on 06/2021+
- Superior frontal protection, due to the impact absorbing hollow construction
- Antenna mount location on top of the accessory bracket
- UV stabilised polymer for durability and corrosion resistance
- Styled to maintain the Vehicle's aesthetic
- Proudly designed and manufactured in Australia
- Minimal maintenance
- Minimal repair costs after impact
- Manufactured from environmentally friendly, recyclable polyethylene polymer
- Available in Black as standard, other colours available for large order quantities
- Accommodates a large range of spotlights
- Accommodates up to 10,000lb Winch
- Compatible with ARB Under Vehicle Protection
- Compatible with ARB Recovery Points
- Compatible with SmartBar All-in-1 Light
- High Lift Jack point available as an option with winch bars
- StealthBar is compatible with vehicles that are equipped with Toyota Safety Sense Technology (see Light and Winch fitments pages for compatibility)
- Does not accept the original vehicle fog lights - see Part Matrix for replacement fog lights
- Compatible with original Toyota Front parking sensors - see Part Matrix for part numbers

Chassis Mounts:

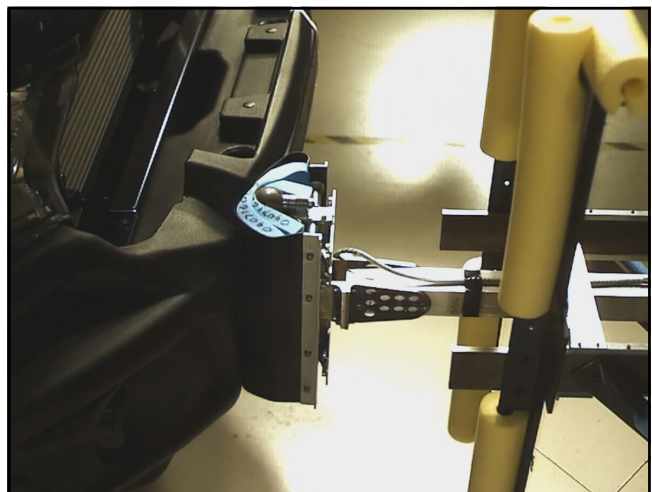
The chassis mounts are designed to be easily fitted to the vehicle, reducing fitting time. The single part construction allows for three axis adjustability, to achieve a solid and perfect fit every time.

All brackets have been tested and comply with Vehicle Air Bag compatibility, Winch Maximum Pull Exertion and Australian Safety Standards.



Pedestrian Safety:

SmartBar's have been tested and proven to be less likely to cause serious injury to pedestrians than other alternatives. This is due to the hollow construction which allows the bar to absorb most of the impact along with the unique and specifically designed co-polymer material.



Underwing Panel Kit:

The under wings are designed to provide even more protection to the under body of the Toyota HiLux outside of the chassis rails.

The under wing panels are compatible with the ARB UVP and ARB recovery points.



Under Vehicle Protection:

The HiLux StealthBar in both winch and non winch configurations, is compatible with the ARB Under Vehicle Protection (UVP).



Recovery Point:

The HiLux StealthBar in both winch and non winch configurations, is compatible with the ARB recovery points to assist with vehicle recovery. Shown in Red here.




Driving Light Mounts:

The StealthBar is supplied with an accessory bracket to mount driving lights, light bars and other accessories.

The mount includes pinning holes for the Intensity lights.

To see further details on light fitment see page 9.

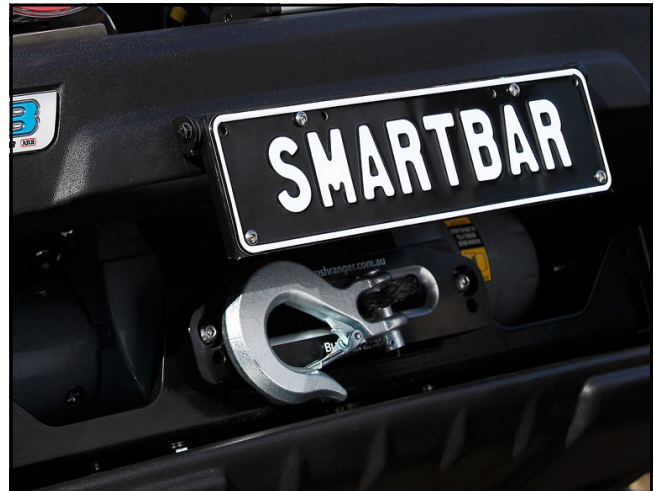
 **IMPORTANT: To be compatible with the safety sense systems individual driving lights must have a minimum distance of 100mm between them.**



Winch Mount:

The StealthBar winch bracket kit is compatible for winches up to 10,000lb. See page 7 for full winch details.

A flip up number plate bracket is recommended for standard size number plates when SmartBar's are fitted with a winch, ARB Part number 3500630.

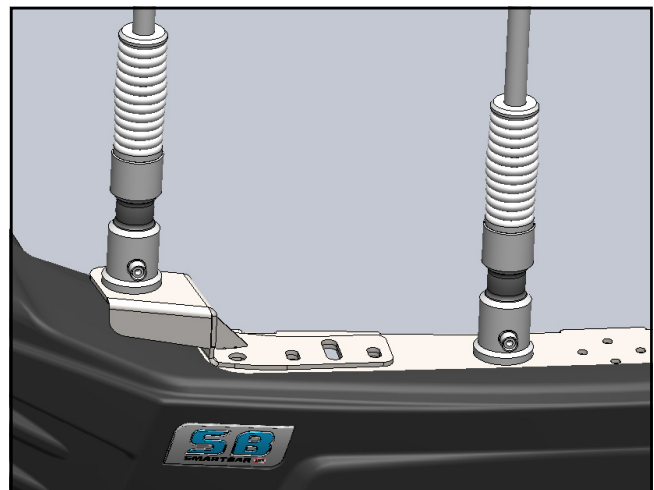


Antenna Mounts:

Antenna / Sand Flag mounts are conveniently located in the centre of the StealthBar for a single antenna. Additional antenna mounts can be purchased separately and attached to the accessory bracket.

Part number: SA190AR - RH Side

Part number: SA190AL - LH Side



High Lift Jack Point:

The StealthBar winch bracket kit fits the High Lift Jack point.

High Lift Jack point sold as optional extra.

Part number: SAHLJ1



High Lift Jack:

The High Lift Jack point is compatible with ARB's Jack and standard High Lift Jack'.



Parking Sensors:


The StealthBar is now compatible with the original Toyota front parking sensors. See part matrix for details.



Toyota Safety Sense:

The StealthBar is compatible with vehicles that are equipped with Toyota Safety Sense Technology, including:

- LDA: Lane Departure Assist and Lane Tracing
- PCS: Pre-Collision System
- RSA: Road Sign Assist
- DRCC: Dynamic Radar Cruise Control (Adaptive Cruise)

 **IMPORTANT: To be compatible with the safety sense systems individual driving lights must have a minimum distance of 100mm between them.**



Fog Lights:

The original HiLux fog lights are not compatible with the StealthBar.

Replacement Fog Lights are optional for Workmate and SR models.

Replacement Fog Lights are required for SR5 models.

See part matrix for details.



StealthBar All-in-1 Light option:

The StealthBar All-in-1 Light can be fitted as an option. This light has a driving light, daytime running light (a maximum of 2 x DRL's are permitted to ADR requirements), fog light, parking light and indicator.

Complete functionality is optional but may require additional wiring. See part matrix for details.

The All-in-1 Light comes with a 5 year warranty.

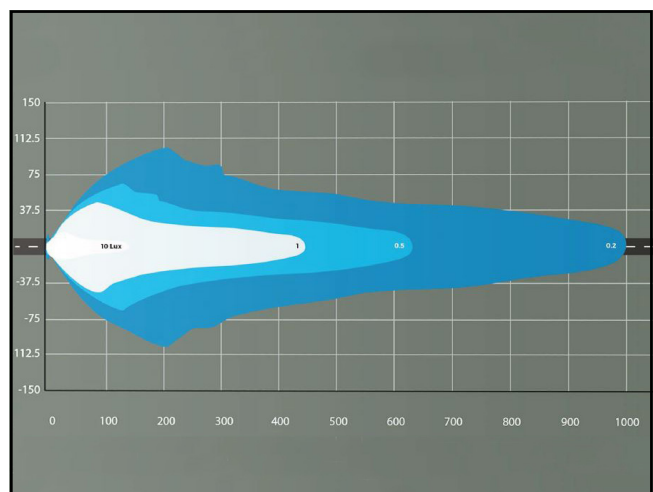


StealthBar All-in-1 Light functions:

Driving light function can be added to the All-in-1 Light with additional wiring kits.

ARB Driving Light Wiring Loom (3500520) will be required.

On vehicles not fitted with fog lights ARB Fog Light Wiring Loom (3500530) will be required.



Winch Model Fitment:

The StealthBar winch compatible bracket kit accommodates the following winches:

- Warn ZEON 8, 8-S, 10, 10-S
- Warn ZEON Platinum 10 and 10-S
- Warn Magnum 8 and 10lb
- Bushranger Revo 10lb
- Smittybilt X20 10lb

Additional fit kits are required depending on the winch being fitted:

- A flip up number plate bracket is recommended for standard size number plates when SmartBar's are fitted with a winch, ARB Part number 3500630.
- Warn ZEON Platinum fitment may require part No. W94288 Enhanced Signal Kit.

! IMPORTANT: Fitment of the Control Box to the accessory bracket may interfere with Toyota Safety Sense technology. SmartBar recommends mounting the Control Box elsewhere.



Light Model Fitment:

The StealthBar for the Toyota HiLux models accommodates the following lights:

ARB Intensity:

- ARB Intensity 21¹
- ARB Intensity 32¹

Bushranger Night Hawk lights:

- VLI Series light bars (5.5 inch to 20.5 inch)
- VLI Series driving lights¹
- NHT055VLI - NHT245VLI

IPF Lights:

- 801/901 Xtreme Sport Series
- 800/900 HID Series
- 800/900 Series
- 900 Xtreme LED Sport Series
- 868/968 Series
- 930 Super Rally
- note: IPF rectangular lights will not fit with antenna/sand flag bracket



¹IMPORTANT: To be compatible with the safety sense systems individual driving lights must have a minimum distance of 100mm between them.

Light bars must not be more than 100mm above the mounting bracket.



PART NUMBER MATRIX



STEALTHBAR Toyota HiLux 2020+

Fitting Time	3 Hours	4 Hours	1 Hour	25 Mins	90 Mins	90 Mins	15 Mins	15 Mins	15 Mins	15 Mins	15 Mins	
4x2 Toyota HiLux	Model (Guide Only)											
4x2 (Narrow Body)	NA	NA	NA	NA	NA	NA	NA	NA	NA	NA	NA	NA
4x2 High-Rider (Wide Body) ¹	SA190BL190	NA	SAALK ⁷	SA190LBK ⁷	3500530 ⁸	SA190AR	SA190AL	NA	BP80628	SA190GBK ¹¹	NA	NA
4x2 Hi-Rider (Wide Body) Parking Sensor Vehicles	SA274BL190	NA	SAALK ⁷	SA190LBK ⁷	3500520 ⁹	SA190AR	SA190AL	NA	NA	SA190GBK ¹¹	BP80628 ¹⁰	NA

4x4 Toyota HiLux	Model (Guide Only)												
4x4 (Narrow Body) ⁴	NA	NA	NA	NA	NA	NA	NA	NA	NA	NA	NA	NA	NA
4x4 (Wide Body) ¹	SA190BL190	SA190BL191	SAALK ⁷	SA190LBK ⁷	3500530 ⁸	SA190AR	SA190AL	SAHLJ1 ⁶	BP80628	SA190GBK ¹¹	NA	NA	NA
4x4 (Wide Body) ¹	SA190BL190	SA190BL191	SAALK ⁷	SA190LBK ⁷	3500520 ⁹	SA190AR	SA190AL	SAHLJ1 ⁶	BP80628	SA190GBK ¹¹	NA	NA	NA
4x4 Hi-Rider (Wide Body) Parking Sensor Vehicles ¹	SA274BL190	SA274BL191	SAALK ⁷	SA190LBK ⁷	3500520 ⁹	SA190AR	SA190AL	SAHLJ1 ⁶	NA	SA190GBK ¹¹	BP80628 ¹⁰	NA	NA

Please note:

- ¹ Bumper trim is required for pre-08/2018 models and 08/2018+ WorkMate models
- ² 4x2 (Non High-Rider) WorkMate Single-Cab and Double-Cab are narrow body only StealthBar fitment is yet to be confirmed
- ³ 4x2 Hi-Rider SR comes in both Extra-Cab and Double Cab
- ⁴ Only Narrow Body 4x4 option is the Single-Cab SR and WorkMate, StealthBar fitment is yet to be confirmed
- ⁵ Only available in black, other colour options available in larger quantities
- ⁶ Optional High Lift Jack Point compatible with winch kit only
- ⁷ Bracket kit SA190LBK is required to fit SmartBar All-in-1 Light
- ⁸ To use fog light function on the SmartBar All-in-1 Light ARB Fog Light Wiring Loom (3500530) is required
- ⁹ To use driving light function on the SmartBar All-in-1 Light ARB Driving Light Wiring Loom (3500520) is required, this loom can also be used to fit additional spot lights
- ¹⁰ SR5 and models with OE fog lights require BP80628 or SAALK
- ¹¹ Grille Bracket kit required for 2020+ facelift models
- ¹² Fitment to Rogue or Rugged X models not confirmed