

# PRODUCT SPECIFICATIONS

**Publication Date:**

May, 2024

**Description:**

Toyota Fortuner SpartanBar

**Application:**

Toyota Fortuner 06/20+ Models

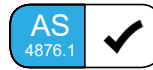
**Fitting:**

Minimum 3.5 Hours (Non Winch)

Minimum 5 Hours (Winch)

**Available:**

Now



## Product Specification

Toyota has released the long-awaited facelift models of their latest generation Fortuner, reinvigorating the range with an updated headlight, bumper and grille design.

The Fortuner SpartanBar has been tested and fitment is confirmed for the 2020+ facelift models GX, GXL and Crusade (see matrix for full model specific fitment information). Engineered to be the lightest and safest VFPS available, offering superior protection and safety for Fortuner owners and pedestrians.

The SpartanBar maintains all of the Fortuner safety systems and driver aids such as the Lane Departure Assist and Lane Tracing (LDA), Pre-Collision System (PCS), Road Sign Assist (RSA) and Dynamic Radar Cruise Control (Adaptive Cruise) (DRCC).

It has also been updated to be compatible with Front Parking Sensors and Front Parking Camera.

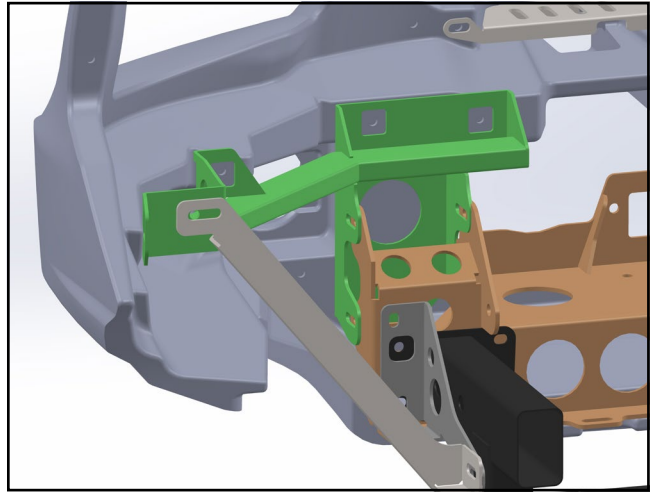
## Protection & Styling Characteristics:

- Meets full Australian Standard AS 4876.1-2002. Including 3.2 Road User Protection
- Weight savings provide improved fuel economy and reduced tyre, suspension and brake wear when compared to other alternatives
- Fitted Weight of **32kg for Non Winch**
- Fitted Weight of **44kg for Winch**
- Bar adds an approximate additional 230mm to vehicle length
- Air Bag Compatible
- Bumper trim, easily fitted
- Superior frontal protection, due to the impact absorbing hollow construction
- Supplied with durable LED Parker/Indicator Lights
- Supplied with durable Day Time Running Lights for all models 06/20+
- Supplied with 1 x Antenna Mount
- Antenna mount location on loops of the bar, up to 4 available
- UV stabilised polymer for durability and corrosion resistance
- Styled to maintain the Vehicle's aesthetic
- Proudly designed and manufactured in Australia
- Minimal maintenance
- Minimal repair costs after impact
- Manufactured from environmentally friendly, recyclable polyethylene polymer
- Available in Black as standard, other colours available for large order quantities
- Accommodates a large range of spotlights
- Accommodates up to 10,000lb Winch (please refer overleaf for winch compatibility)
- Compatible with ARB Under Vehicle Protection
- Compatible with ARB Recovery Points
- SmartBar is tested to ensure a HIC (Head Injury Criteria) figure below the Australian Standard rating of 1500, as to provide pedestrians with a higher probability of surviving a low speed impact
- SpartanBar is compatible with the Toyota Safety Sense Technology (see Light and Winch fitments pages for compatibility)
- Does not accept the original vehicle fog lights for 06/20+ models - see Part Matrix for replacement fog lights
- Compatible with original Toyota Front parking sensors - see Part Matrix for part numbers
- and

## Chassis Mounts:

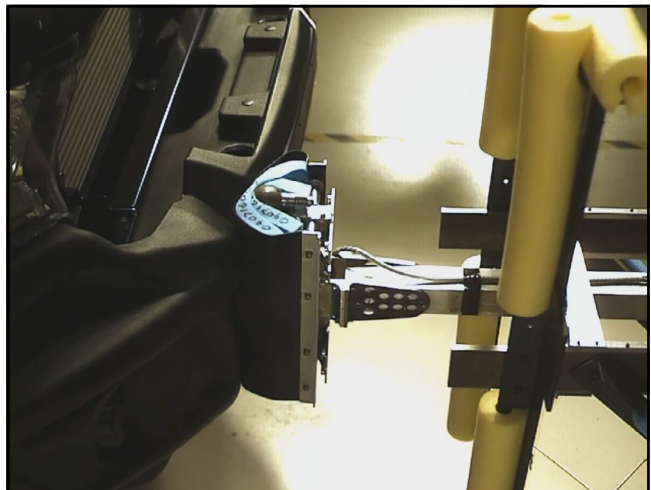
The chassis mount design for the Fortuner SpartanBar comprises of a two part construction which allows for three axis adjustability, to achieve a solid and perfect fit every time.

All brackets have been tested and comply with Vehicle Air Bag, Winch Maximum Pull Exertion and Australian Safety Standards.



## Pedestrian Safety:

SmartBar's have been tested and proven to be less likely to cause serious injury to pedestrians than other alternatives. This is due to the hollow construction which allows the bar to absorb most of the impact along with the unique and specifically designed co-polymer material.



## Recovery Point:

The Fortuner SpartanBar, in both winch and non winch configurations, is compatible with the ARB recovery points to assist with vehicle recovery. Shown in Red here.





## Under Vehicle Protection:

The Fortuner SpartanBar in both winch and non winch configurations, is compatible with the ARB Under Vehicle Protection (UVP) and Under Vehicle Armour (UVA).



## Day Time Running Lights:

The SpartanBar design incorporates high quality Hella Day Time Running Lights (DRL) to provide additional safety when driving during daylight hours. The DRL is designed to turn on with the vehicle ignition and off when the vehicle parker lights are turned on.

DRL's are supplied as standard for all models. Please note that a maximum of 2 DRLs are permitted as per ADR requirement.



## Fog Lights:

The original Fortuner fog lights are not compatible with the SpartanBar.

Replacement Fog Lights are required for GXL & Crusade models.

Fog Lights are optional for GX models.

See part matrix for details.



## Antenna Mounts:

There are antenna mounts incorporated on the top loops of the bull bar. The SpartanBar is supplied with a single antenna mount (000-AMB21). Additional antenna mounts can be purchased:

Vertical Mount: SAAMB21 (supplied)

Horizontal Mount: SAAMB22 (optional extra)



## Driving Light Mounts:

The SpartanBar is supplied with an accessory bracket to mount driving lights and light bars.

The mount includes pinning holes for the Intensity lights. For further details on light fitment see overleaf.

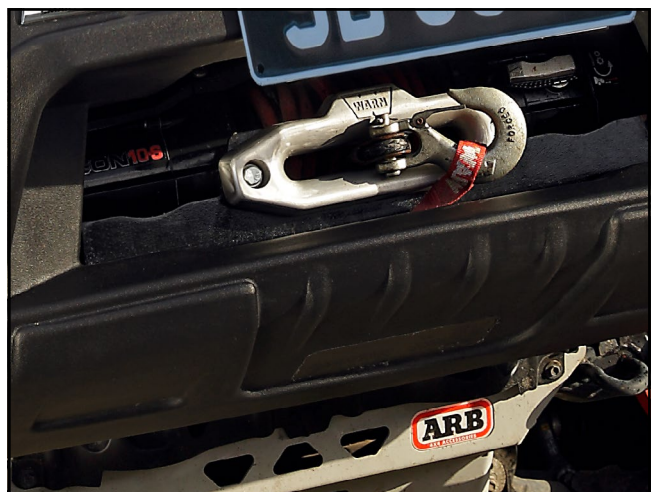


**IMPORTANT: To be compatible with the safety sense systems individual driving lights must have a minimum distance of 100mm between them.**



## Winch Mount:

The SpartanBar winch bracket kit is winch compatible for winches up to 10,000lb. See page 7 for full winch details.



## Toyota Safety Sense:

The SpartanBar is compatible with vehicles that are equipped with Toyota Safety Sense Technology, including:

- LDA: Lane Departure Assist and Lane Tracing
- PCS: Pre-Collision System
- RSA: Road Sign Assist
- DRCC: Dynamic Radar Cruise Control (Adaptive Cruise)



**IMPORTANT: To be compatible with the safety sense systems individual driving lights must have a minimum distance of 100mm between them.**

## Parking Sensors:

The SpartanBar is now compatible with the original Toyota front parking sensors. See part matrix for details.





## Winch Model Fitment:

The SpartanBar winch compatible bracket kit accommodates the following winches:

- Warn M8000, XD9000, XP9.5 and XDC 9.5.
- Warn ZEON 8, 8-S, 10, 10-S.
- Warn ZEON Platinum 10, 10-S.
- Warn Magnum 8, 10
- Bushranger Revo 10lb

Additional fit kits are required depending on the winch being fitted:

- A flip up number plate bracket is recommended for standard size number plates when SmartBars are fitted with a winch, ARB Part number 3500630.
- Warn ZEON Platinum fitment may require part No. W94288 Enhanced Signal Kit.



**IMPORTANT: Fitment of the Control Box to the accessory bracket may interfere with Toyota Safety Sense technology. SmartBar recommends mounting the Control Box elsewhere.**



## Light Model Fitment:

The SpartanBar accommodates the following Lights:

ARB Intensity:

- ARB Intensity 21

Bushranger Night Hawk lights:

- VLI Series driving light 7" <sup>1</sup>
- NHT055VLI - NHT245VLI (5.5 inch to 24.5 inch light bars)

IPF Lights:

- 801/901 Xtreme Sport Series
- 800/900 HID Series
- 800/900 Series
- 900 Xtreme LED Sport Series
- 868/968 Series
- 930 Super Rally



**IMPORTANT: To be compatible with the safety sense systems individual driving lights must have a minimum distance of 100mm between them.**

**Light bars must not be more that 100mm above the mounting bracket.**





# PART NUMBER MATRIX



## SMARTBAR TOYOTA FORTUNER (06/20+)

Fitting Time	3.5 Hours	5 Hours	15 Mins <sup>5</sup>	15 Mins <sup>5</sup>	15 Mins <sup>5</sup>	30 Mins
Toyota Fortuner	SmartBar non winch	SmartBar winch	Optional Fog Lights	Required Fog Lights	279 Grille Bracket Kit	Front Camera Relocation Kit
	Model (Guide Only)					
4x4	SA268BL170 <sup>1</sup>	SA268BL188 <sup>1</sup>	BP80628 <sup>2</sup>	NA	SAZ79GBK <sup>3</sup>	SA170CRK
4x4	SA268BL170 <sup>1,4</sup>	SA268BL188 <sup>1,4</sup>	NA	BP80628	SAZ79GBK <sup>3</sup>	SA170CRK

Please note:

- <sup>1</sup> All variants come supplied with DRL's as standard
- <sup>2</sup> GX models don't come with fog lights as standard
- <sup>3</sup> Contains LED Resistors to rectify 'hyper flash' when going incandescent to LED indicator
- <sup>4</sup> Crusade wiring for parker indicator has not be confirmed
- <sup>5</sup> To be fitted during SmartBar installation