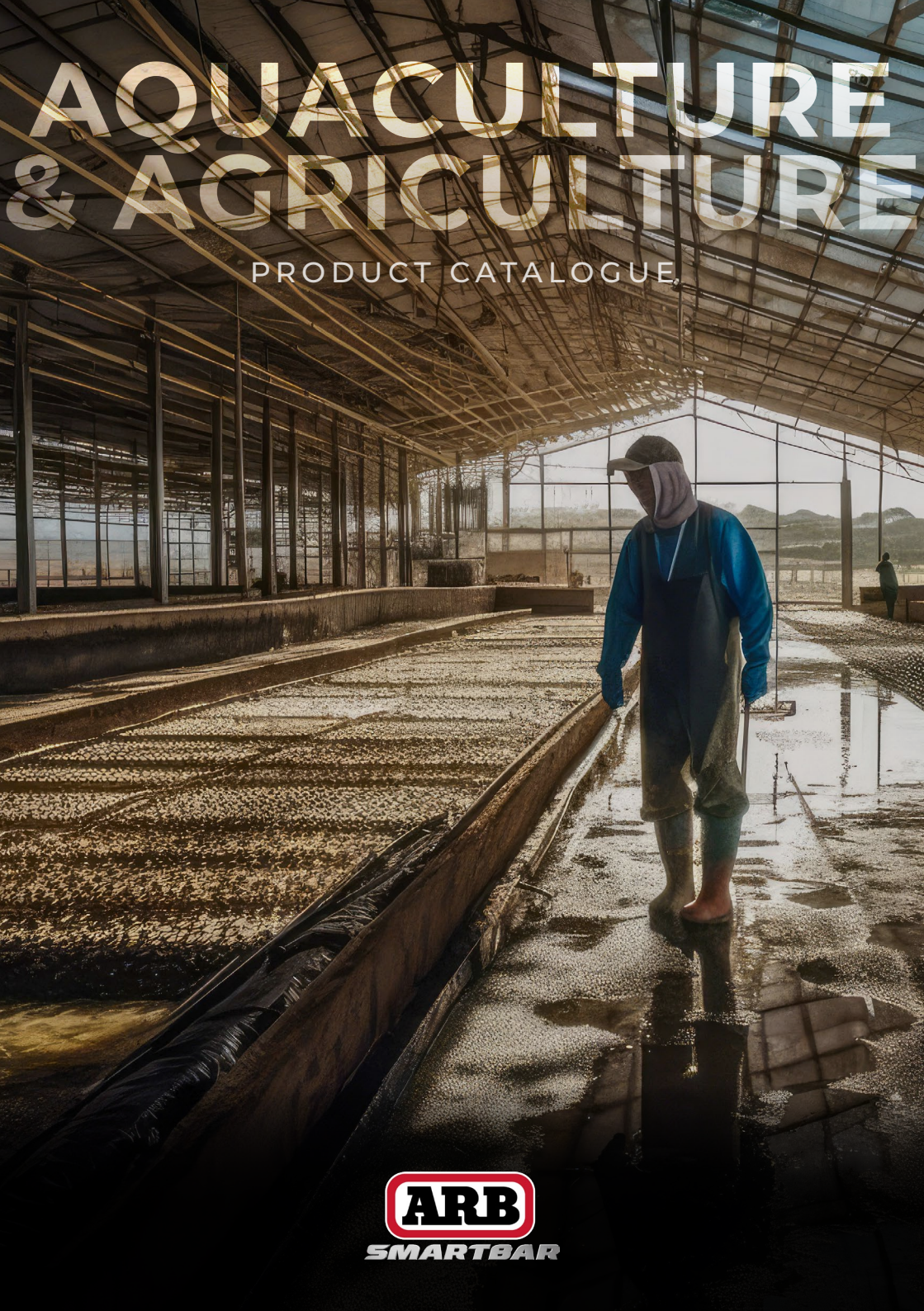
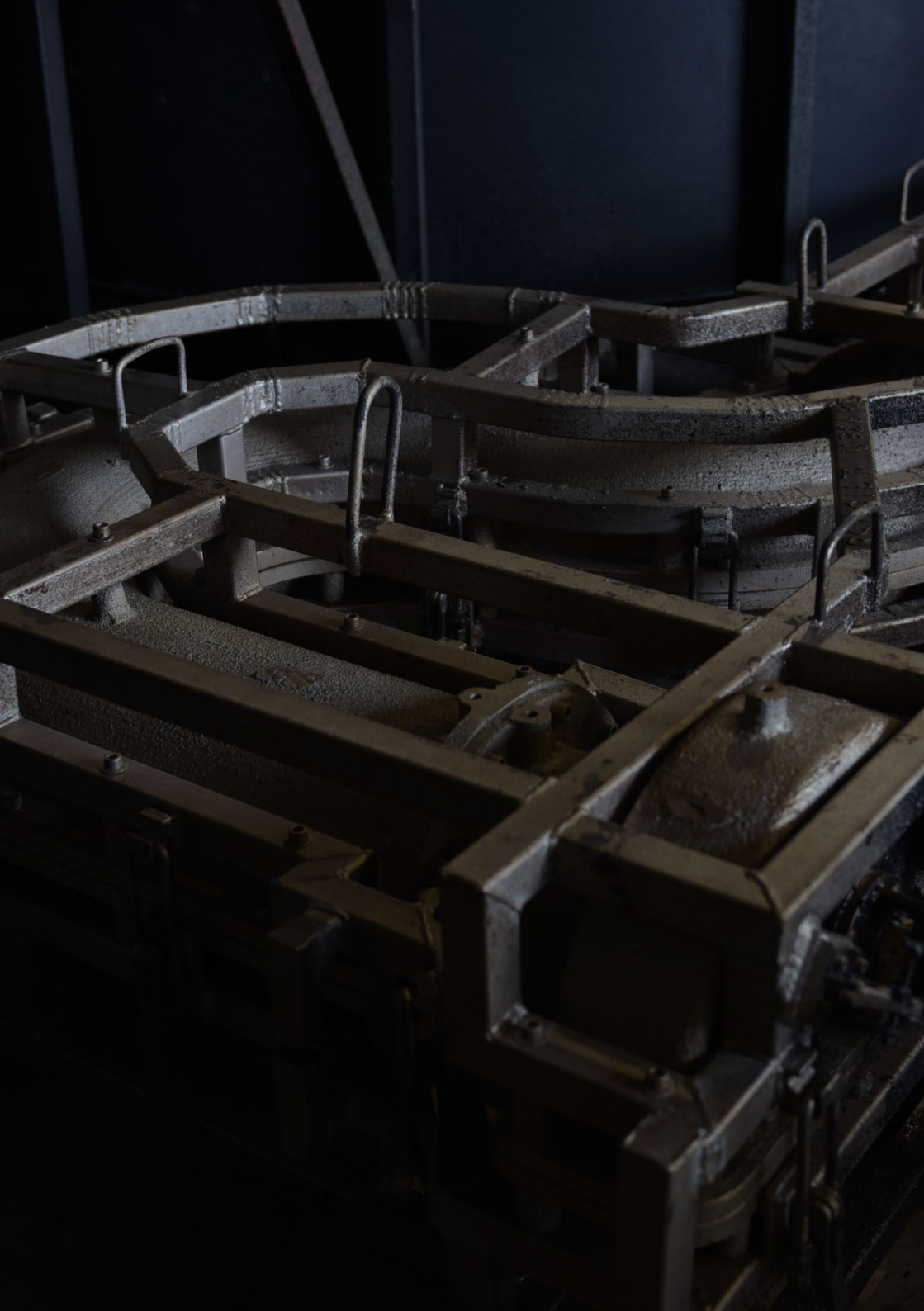


AQUACULTURE & AGRICULTURE

PRODUCT CATALOGUE



SMARTBAR





ROTATIONAL MOULDING EXPERTS, TAILORED SOLUTIONS

At ARB SmartBar, we pride ourselves as specialists who bring together years of experience in rotational moulding and a deep understanding of the automotive industry to drive constant innovation and evolution in our products.

An Australian company, and the polymer experts of ARB 4X4 accessories, our passion for the rotational moulding process fuels our commitment to innovation, ensuring that we stay at the forefront of technological advancements.

Manufacturers at heart, our drive to create extends far beyond the automotive sector, encompassing a diverse range of products across various industries. Our customers depend on our unique material blends, agile processes, and proven track record underscoring our efficiency and scalability. This inherent capability has organically propelled us into new sectors.

Today, our portfolio includes a wide array of high-quality products tailored for automotive, agriculture and aquaculture sectors. Manufactured locally in South Australia, our specialty products are crafted using state-of-the-art machinery and often exceed stringent Australian standards.

We take a hands-on approach to manufacturing, granting us unparalleled control over every step of the production process, resulting in optimal end products.

From mine sites, to ocean front marinas, to rural farms and remote overland travellers our products are trusted for their resilience against corrosive environments and the strong Australian sun, making them ideal for the harshest environments.

With ARB SmartBar, you're not just getting world-class solutions; you're receiving them from local experts dedicated to delivering excellence.

All of our products are made at our state of the art facility in Lonsdale, South Australia.

PRODUCT INDEX

> AQUACULTURE & MARINE

- 05 Eco Flow Flush System
- 07 Abalone Trays
- 08 Mussel Floats
- 09 Modular Pontoon Systems

> FIRE FIGHTER UNITS

- 11 400L | 600L

> DIESEL CARTAGE TANKS

- 13 250L | 400L | 600L

> PORTABLE TANKS

- 16 28L Wash Station
- 17 30L Diesel Tank

AQUACULTURE & MARINE

Our polymer product line plays a crucial role in supporting the aquaculture and marine industries by providing innovative solutions to a range of challenges. Engineered to thrive in tough marine conditions, our products are built to endure harsh environments, resist corrosion, and improve operational efficiency.

In aquaculture, our unique material blend offers durability, flexibility, and resistance to biofouling. Incorporating food-grade polymers, we ensure a safe and reliable environment for aquaculture activities.

For marine infrastructure such as pontoons, buoys, and offshore platforms, our lightweight yet durable products offer low maintenance requirements and excellent resistance to saltwater corrosion. This makes them a cost-effective and long-lasting choice for marine installations.



ECO FLOW FLUSH SYSTEM

2000L | BS002 4000L | BS001



*Timber frame not included

DIMENSIONS 2000L 1450D x 1330H | 4000L 2240D x 1330H

The ARB Eco Flow Flush System is a revolutionary non-mechanical solution for efficiently flushing large water volumes, ensuring a maintenance-free and economical flush process. Suitable for aquaculture and agriculture farming, the automatic flushing system promotes healthier ecosystems, reducing water delivery costs and infrastructure needs.

Available off-the-shelf in two sizes, the Eco Flow requires minimal input flow but delivers a powerful output flush. Designed and manufactured in Australia using durable, recyclable materials, it is ideal for saltwater and harsh Australian climates.

FEATURES

- > Off-the-shelf solution that can be retrofitted into other systems
- > Provides large volume flush
- > Designed for saltwater and high UV environments
- > Flexible roto-moulded design for structural integrity against vibrations & negative pressure
- > Automatic, non-mechanical system
- > Simple control from low water volume input
- > Made from Food Grade Polyethylene
- > High UV stability



LEARN MORE

ABALONE TRAYS

PRODUCT CODE: TP979



DIMENSIONS 2290 x 1330 x 565

Constructed using a rotationally moulded Linear Low Density Polyethylene (LLDPE) which is perfectly suited to marine applications. These trays have been specially designed to closely mirror the natural environment that abalone inhabit on rocks and reefs. This enables the abalone to feed and grow more effectively, reducing the amount of handling required and in turn stress caused to the animals. Less handling and stress results in reduced mortality rates, maximises growth and ultimately an increased market value of the abalone.

FEATURES

- > Rotomoulded construction
- > Made from highly durable LLDPE
- > UV Stabilised
- > 75mm OD Outlet
- > Available in Black
- > Strong and Durable
- > Low Maintenance and Cost Effective
- > Will not corrode or rot
- > Easy to Handle & Manoeuvre
- > Minimises stress and mortality of Abalone
- > Maximise growth and yield rates
- > LLDPE material is compliant with section 5 and Clause 6.1 of AS/NZS 4766:2006 with regard to potable water standards



LEARN MORE

MUSSEL FLOATS

PRODUCT CODE: TP986



DIMENSIONS 775 x 1380

Suitable for inshore and offshore locations, our Mussel Floats have been used in a wide range of applications including many mining functions on river systems and dams across Australia. They're constructed using a Linear Low Density Polyethylene (LLDPE) which is especially formulated with UV stabilisers to suit marine applications. They have around 315kg of displacement, making them ideal for use in long line farming methods.

FEATURES

- > 125mm x 55mm handles
- > 670mm body diameter
- > Rotomoulded construction
- > Made from highly durable, food grade LLDPE
- > UV Stabilised
- > Available in Black
- > Strong and Durable
- > Low Maintenance and Cost Effective
- > 3 Mounting Locations
- > Will not corrode or rot
- > Exceptionally stiff and robust
- > Ideal for both inshore and offshore locations



LEARN MORE

MODULAR PONTOON SYSTEMS

PRODUCT CODE: REFER TO SMARTBAR.COM.AU



Our Modular Pontoon System is a smart, lightweight structure which with its 1m modular design allows for almost limitless configurations. The system is made up of two major components, the deck and the pontoon base.

The deck is a rotomoulded Linear Low Density Polyethylene (LLDPE) product that is perfectly suited to its marine applications. The part maintains an exceptional balance of stiffness and toughness, is highly resistant to chemicals and environmental stress cracking (ESC).

The base is made from the same LLDPE material with added polyethylene re-grind particles for additional strength and rigidity. This increases the resistance to impact. Unlike the deck, the base is foam filled to ensure that should the skin of the base be broken, it won't fill with water; keeping you afloat in most situations.

Easy and economical to transport, our decks come with a 10 year warranty against UV degradation and can accommodate optional components such as ladders, hand rails and pile guides. There's no job too big or too small, we have the capacity and ability to cater jobs to your needs; and have extensive expertise with complex, large scale installations.

With almost endless design possibilities and even customisable standard parts or components, our team can design the right modular pontoon solution for your project.

FEATURES

- Rotomoulded construction
- Unsinkable design
- 10 year Warranty against UV degradation
- Highly resistant to chemicals and environmental stress cracking (ESCR).
- Channels between deck and base allow for service cables (such as power).
- Easy to install
- Extra float available to provide extra buoyancy and added 94kg load capacity
- Material used has been formulated to pass the UV requirements of AS/NZS4766:2006
- Ladders, cleats, fenders, hand rails and other accessories also available

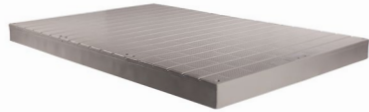


PONTOON BASE

- > Foam filled, rotomoulded Polyethylene combined with regrind for added strength and durability
- > Up to 913kg load capacity
- > 40 x M10 locations used to attach accessories to Pontoon Base, such as Joiner Plates
- > Support pad kits available
- > Available in black

SIZES

- > 1m x 1m
- > 2m x 1m
- > 3m x 1m
- > 3m x 2m



PONTOON DECK

- > Rotomoulded Polyethylene
- > Durable, moulded non-slip surface
- > Available with galvanised or stainless steel hardware
- > Available in 3 colours
 - > Slate Grey
 - > Birch Grey
 - > River Gum

SIZES

- > 2m x 1m
- > 3m x 1m
- > 3m x 2m

ACCESSORIES

- | | | |
|------------------|----------------|----------------------------|
| > Gangway kits | > Cleat Kit | > Ladders |
| > Extra Float | > Hand Rails | > Mooring Chain Attachment |
| > Fender Kit | > Hinge Kits | > Pile guide & kits |
| > Abutment Hinge | > Joiners kits | > Support Pad Kit |



LEARN MORE

FIRE FIGHTER UNITS

Our range of Fire Fighter Units provide users with easy installation and great versatility; being designed to fit and slip-on to most standard and one tonne utilities, they are portable via vehicle to ensure you'll have a rapid response wherever the fire may be. When your livelihood is on the line, there's no time to waste.



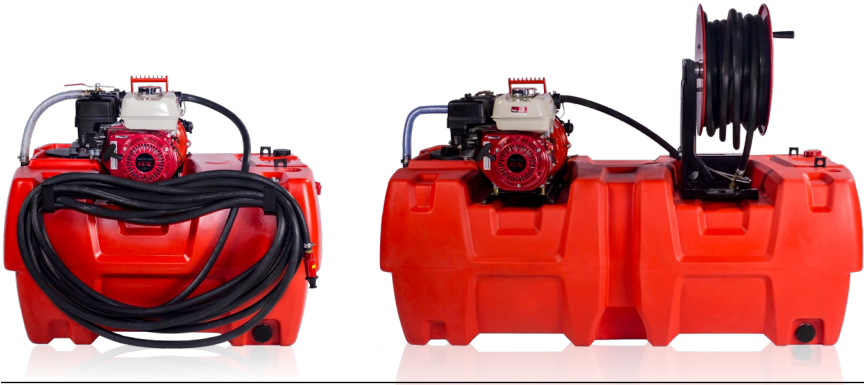
LEARN MORE

400L & 600L

PRODUCT CODE:

400L | TP382 (SINGLE IMPELLER) | TP399 (TWIN IMPELLER) | TP404 (BARE TANK)

600L | TP474 (SINGLE IMPELLER) | TP481 (TWIN IMPELLER) | TP498 (BARE TANK)



DIMENSIONS 400L 1170 x 900 x 950 | 600L 1750 x 900 x 1150

FEATURES

- > UV stabilised, impact resistant, rust proof poly tank
- > Clear & easily readable water level gauge
- > Moulded Handles/Tie Down Points
- > 6m of suction hose with brass foot valve
- > Camlock fittings and 1" bypass & ball valve for quick filling of tank from external source
- > 3-way ball valve for quick suction changeover
- > (600L) 36mx19m hose with reel & adjustable brass nozzle
- > (400L) 20mx19m hose with adjustable moulded plastic nozzle
- > Inlet basket filter
- > 10L Wash Bottle
- > 2" Drain and Plug
- > Screw on Lid
- > **Davey Centrifugal Pump & Honda 5.5hp Motor:**
 - > Single Impeller 5155H
 - > Supplied Standard
 - > 500L/min Max Flow
 - > 72m/7m Max Head/Suction Lift
 - > Twin Impeller 5255H
 - > 400L/min Max Flow
 - > 106m/7m Max Head/Suction Lift
- > Designed for easy fitment to utes or trailers
- > Durable, versatile, easy to use
- > Available as a Bare Tank
- > Spare Parts Available

DIESEL CARTAGE

All SmartBar Diesel Cartage Tanks are roto-moulded from quality, diesel grade polyethylene and have been designed to fit and slip-on to most standard and one tonne utilities. They're available in 3 sizes with your choice of a hand wind pump, or a 40L/min 12v Piusi pump with either an automatic or manual shut off gun.



LEARN MORE

250L, 400L & 600L

PRODUCT CODE:

250L | TP283 (w/ 12v AUTO PUMP) | TP306 (BARE TANK)

400L | TP351 (w/ 12v AUTO PUMP) | TP375 (BARE TANK)

600L | TP443 (w/ 12v AUTO PUMP) | TP467 (BARE TANK)



DIMENSIONS 250L 1170 x 800 x 460 | 400L 1170 x 800 x 650 | 600L 1750 x 800 x 650

FEATURES

- > Diesel Grade Polyethylene construction
- > UV stabilised, impact resistant, rust proof tank
- > Includes Diesel breather
- > Moulded Handles/Tie Down Points
- > 10L Wash Bottle
- > Nozzle holder, hose hanger, suction filter & outlet
- > Galvanised bottom fill inlet pipe
- > Filler cap with strainer and breather system
- > Hardwood dipstick
- > Earthing facility
- > **12v Piusi Pump (Auto):**
 - > 40L/min with alligator clips and 2m of cable
 - > 4m of delivery hose with auto (D12A) shut off gun
- > Available as a Bare Tank
- > Spare Parts Available

PORTABLE TANKS

The ARB Portable Tank Range is designed for function. Engineered to be ultra-tough, and to withstand anything that comes your way. Made from UV stabilised polymer for safety, durability and ample corrosion resistance.

Made to last, the ARB Portable Tank Range is the Smarter, Safer, and most convenient option for your portable water and diesel storage.



LEARN MORE

28L WASH STATION

PRODUCT CODE: WT001MGASSY

Carry 28 litres of potable water in the ARB Wash Station with incorporated refillable bottles for your sanitiser, soap or sunscreen. Perfect for on the work site and on the road.



DIMENSIONS 585 x 260 x 380

VOLUME 28L (7.66 gal)

WEIGHTS Empty 4.5kg (9.9lb) | Filled with water & soap 32.5kg (73.9lb)

FEATURES

- > Shape designed to fit underneath a utility vehicle steel tray, behind the rear wheel
- > Symmetrically designed. Can be mounted to either side of the vehicle
- > Rugged unique styling
- > Soap, Sanitiser or Sunscreen storage
- > 2" BSP inlet for fast refill
- > 1.5" BSP inlet
- > Built in breather for fast pouring
- > Large ergonomically designed handle
- > Food Grade, UV stabilised polymer, for durability & corrosion resistance.
- > Safe for potable water.
- > 3/4" BSP Pouring tap Included
- > **For vehicle mounting, Quick-Release or Fixed brackets are required.**
(sold seperately)

BRACKETS



WT002BK Quick-Release Bracket



WT001BK Fixed Bracket

30L DIESEL TANK

PRODUCT CODE: DT001BL30

If extra diesel is what you need the 30L Diesel Tank is larger than the standard jerry cans and will guarantee to get you further.



DIMENSIONS 595 x 260 x 380

VOLUME 30L (8 gal)

WEIGHTS Empty 4kg (8.8lb) | Filled with diesel 34kg (74.9lb)

FEATURES

- > Shape designed to fit underneath a utility vehicle steel tray, behind the rear wheel
- > Symmetrically designed. Can be mounted to either side of the vehicle
- > Rugged unique styling
- > Spout provided for fast pouring.
(Child lock included for safety)
- > 2" BSP inlet for fast refill
- > Built in breather for fast pouring
- > Large ergonomically designed handle
- > Diesel safe materials
- > **For vehicle mounting, Quick-Release Bracket is required.**
(sold seperately)

BRACKETS



WT002BK Quick-Release Bracket

ROTO-MOULDING SOLUTIONS

Roto-moulding, also known as rotational moulding, brings a host of advantages to both the manufacturing process and the strength and durability of the products it provides.

The manufacturing process involves creating hollow polymer (plastic) parts by rotating a large metal mould while heating it to evenly distribute the polymer material and form the desired shape. It allows us to create complex shapes and designs without requiring extensive tooling or machining, making it a cost-effective option for producing unique, large scale and customised items.

Utilising unique shapes and producing a consistent wall thickness in our roto-moulded products significantly enhances their durability and structural integrity. Our unique polymer blends are extremely versatile in terms of material that enable us to produce product suitability for a wide range of applications, from automotive bull bars to fire fighter unit tanks and pontoon systems.

Manufactured in Australia our roto-moulding processes are environmentally friendly due to minimal waste generation and the recyclability of the materials involved.

These combined benefits make roto-moulding a top choice for manufacturers seeking efficient and high-quality production methods.



I CHOOSE SA
#ichoosesa



DIRECTORY

☎ 08 8384 0292
📠 08 8384 0271
✉ info@smartbar.com.au

STREET ADDRESS

📍 36 Waddikee Road
Lonsdale SA 5160

POSTAL ADDRESS

✈ PO Box 41
Lonsdale SA 5160

SOCIAL

📘 facebook.com/smartbaraustalia
📺 youtube.com/smartbaraustalia
📷 @smartbaraustalia

ONLINE

🌐 www.smartbar.com.au

