

# PRODUCT SPECIFICATIONS

**Date:**

September 2023

**Description:**

LandCruiser 70 Series SpartanBar

**Application:**

Toyota LandCruiser 76 Wagon, 78 Troopy & 79 Dual Cab (09/2022-23).

**Fitting:**

Minimum 2.5 Hours (Non Winch)  
Minimum 3 Hours (Winch)

**Available From:**

2022



## Product Specification

Designed for the 70 Series LandCruiser as a full bumper replacement, SmartBar's Vehicle Frontal Protection System (VFPS) perfectly complements the design and shape of the vehicle while providing unparalleled safety. The team at SmartBar have been developing a new radar mount to suit the 70 Series SpartanBars, which is now available.

Compatible with the Troop Carrier, Cab Chassis, Wagon and Dual cab (Workmate, GX and GXL variants); the SmartBar is engineered to be the lightest bull bar available; offering even more protection and safety for vehicle owners and importantly, pedestrians.

Please note that for Single Cab variants from 08/2016 onwards, the vehicle has a different chassis and therefore a different bracket kit is required. Refer to the specification sheet for 70 LandCruiser Single Cab 16+ for further details and part numbers.

## Protection & Styling Characteristics:

- Meets full Australian Standard AS 4876.1-2002. Including section 3.2 Road User Protection
- Weight savings provide improved fuel economy and reduced tyre, suspension and brake wear when compared to other alternatives
- Fitted Weight of **7kg for Non Winch**
- Fitted Weight of **21kg for Winch**
- Bumper replacement, easily fitted
- Superior frontal protection, due to the impact absorbing hollow construction
- Air Bag Compatible
- Supplied with two aerial mounts
- Aerial mount location on loops of the bar, up to 4 available
- Supplied with clear lens turn indicators
- UV stabilised polymer for durability and corrosion resistance
- Styled to maintain the Vehicle's aesthetics
- Proudly designed and manufactured in Australia
- Minimal maintenance
- Minimal repair costs after impact
- Manufactured from environmentally friendly, recyclable polyethylene polymer
- Available in Black, for large order quantities other colours are available
- Accommodates a large range of spotlights
- Winch bar Accommodates up to 10,000lb Winch (please refer overlead for winch compatibility)
- SmartBar adds approximately 80mm to overall length of the vehicle
- Optional Accessories:
  - Dune Flag Mount Bracket
  - LED Indicator Kit
- SmartBar is tested to ensure a HIC (Head Injury Criteria) figure is well below the Australian Standard rating of 1500, so pedestrians have a much higher probability of surviving an impact
- Compatible with the Toyota Safety Sense Systems

## LED Indicators:

Increase the visibility and longevity of the indicators in the SmartBar by replacing the incandescent bulbs with the LED's.

The LED indicators are available for separate purchase.

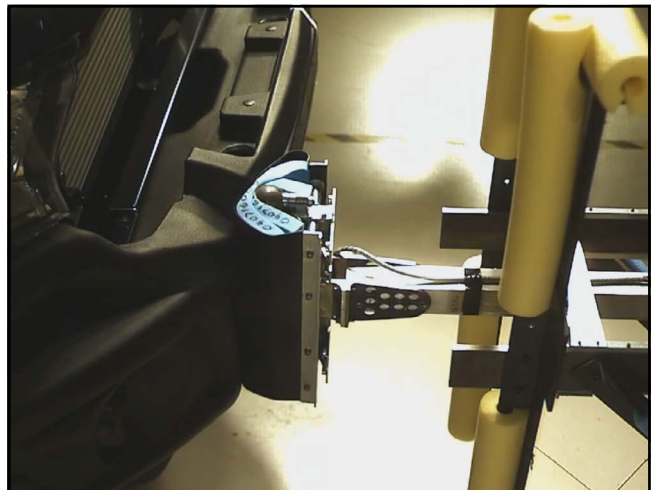
Part Number: **TP48667**

Fitment time: 30min



## Pedestrian Safety:

SmartBar's have been tested and proven to be less likely to cause serious injury to pedestrians than other alternatives. This is due to the hollow construction which allows the bar to absorb most of the impact along with the unique and specifically designed polymer material.



## Driving Light Mounts:

The SmartBar is supplied with an accessory bracket to mount driving lights, light bars and other accessories.

See overleaf for further details on light fitment.



## Winch Mount:

The SmartBar winch bracket is compatible with winches up to 10,000lb.



## Antenna Mounts:

There are antenna mounts incorporated on the top loops of the bull bar. The SmartBar is supplied with a two antenna mounts (000-AMB6 and 000-AMB12).

Additional antenna mounts can be purchased:  
000-AMB6- **MM1241** (horizontal mount)  
000-AMB12- **MM26504** (vertical mount)



## Flag Mount:

To mount Flags and large antenna on the 79 series SmartBar the additional kit 000-FMB1 kit is available for separate purchase.

Part Number: **SA000FMB1**  
Fitment time: 15min



## Winch Model Fitment:

The SmartBar for the winch bracket kit accommodates the following winches:

- Bushranger COVERT 10S, 10W, 12S, 12W
- Bushranger REVO 10S, 10W, 12S, 12W
- Warn M8000, XD9000 and XP9.5.
- Warn ZEON 8, 8-S, 10 and 10-S.
- Warn ZEON Platinum 10 and 10-S.

The SmartBar is supplied with an accessory bracket that mounts to the bar in front of the grille. In some cases, the winch control box can be mounted on the accessory bracket or relocated to the engine bay.

Depending on the winch, the clutch handle will be accessible from either underneath the bar, or through the front of the winch bracket.

Additional fit kits are required depending on the winch being fitted:

- Warn Zeon and Zeon Platinum fitment requires the Warn Part number W89965 Short wiring kit. This kit allows relocation of the control box to the accessory bracket.
- Warn ZEON Platinum fitment may require part No. W94288 Enhanced Signal Kit.



## Light Model Fitment:

The SmartBar accommodates the following Lights:

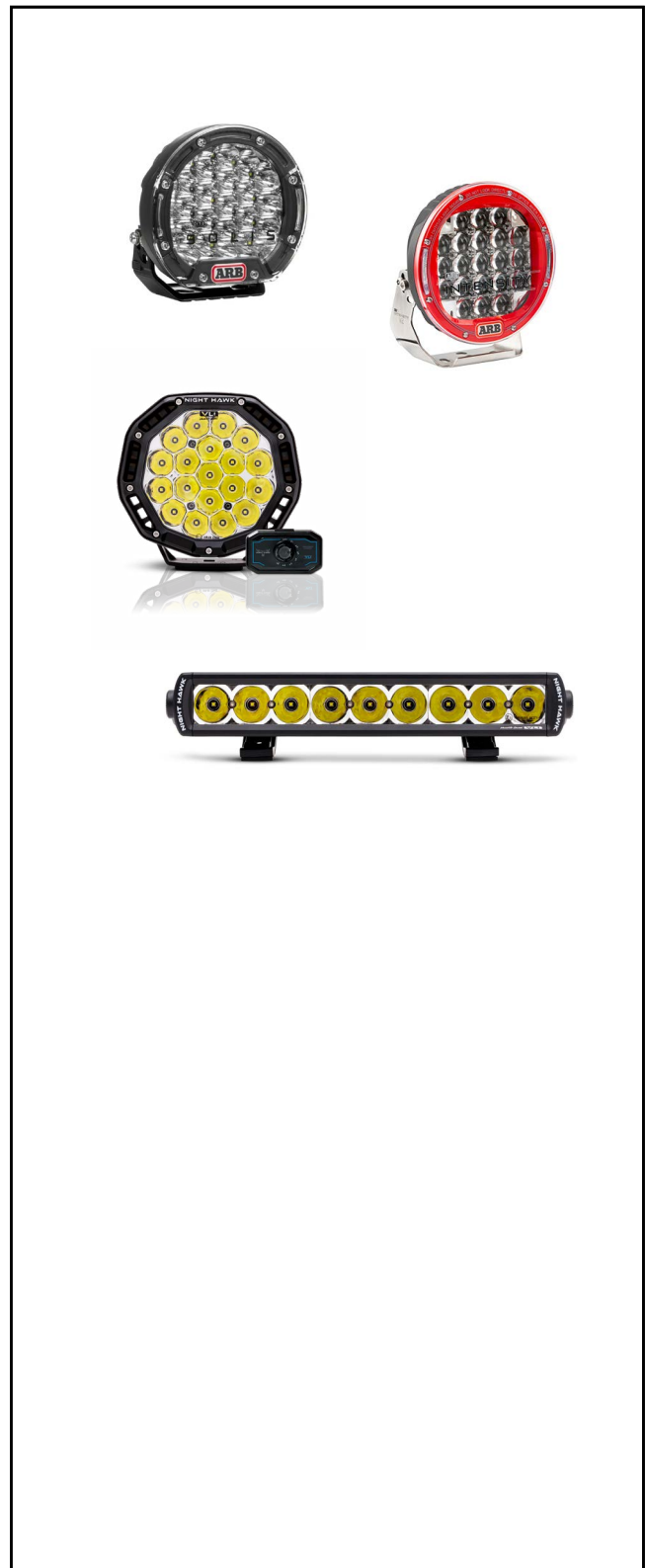
### ARB Intensity:

- ARB Intensity 21
- SJB21 ARB Intensity Solis

### Bushranger Night Hawk lights:

- NHX180VLI 7inch Night Hawk VLI
- NHX055VLI-NHX245VLI Night Hawk VLI Light Bars up to 17"

NOTE: If a control box is fitted to spotlight bracket this may restrict the lights that will fit in the SmartBar and Light Bars will not fit at all.





# PART NUMBER MATRIX

## SMARTBAR TOYOTA LANDCRUISER 70 SERIES

*Double Cab, Wagon & Troopy (exc. Single Cab)*

Fitting Time	2.5 Hours	3.5 Hours	30 Mins	15 Mins
<b>SmartBar Non Winch</b>				
	SmartBar Non Winch	SmartBar Winch	LED Indicator Kit (Optional)	Flag Mount (Optional)
	Model (Guide Only)			
Standard	SA305BL308		TP48667	SA000FMB1
With flares	SA306BL308		TP48667	SA000FMB1
	WorkMate			
	'GX, GXL			
<b>SmartBar Winch</b>				
	Model (Guide Only)			
Standard		SA305BL307	TP48667	SA000FMB1
With flares		SA306BL307	TP48667	SA000FMB1
	WorkMate			
	'GX, GXL			

Please note:  
The SmartBar is only available in Black. Other colours are available for large quantity orders, contact SmartBar for more info.  
\* Troop Carriers do not have flares on any models.